



ΩMEGA TMM

2024 CATALOG

WORLD CLASS TOOL MEASURING
AND MANAGEMENT SOLUTIONS



MADE TO MEASURE
MADE IN THE USA



LASER FOCUSED ON CUSTOMER EXPERIENCE

We are Omega TMM, the final word in tool presetting, inspection, and tool management solutions where our passion is your production. Our machines and solutions are proudly designed, manufactured, and assembled in the USA, and are the most accurate, reliable, and repeatable measuring machines for shop floor management on the market.



Made in the USA

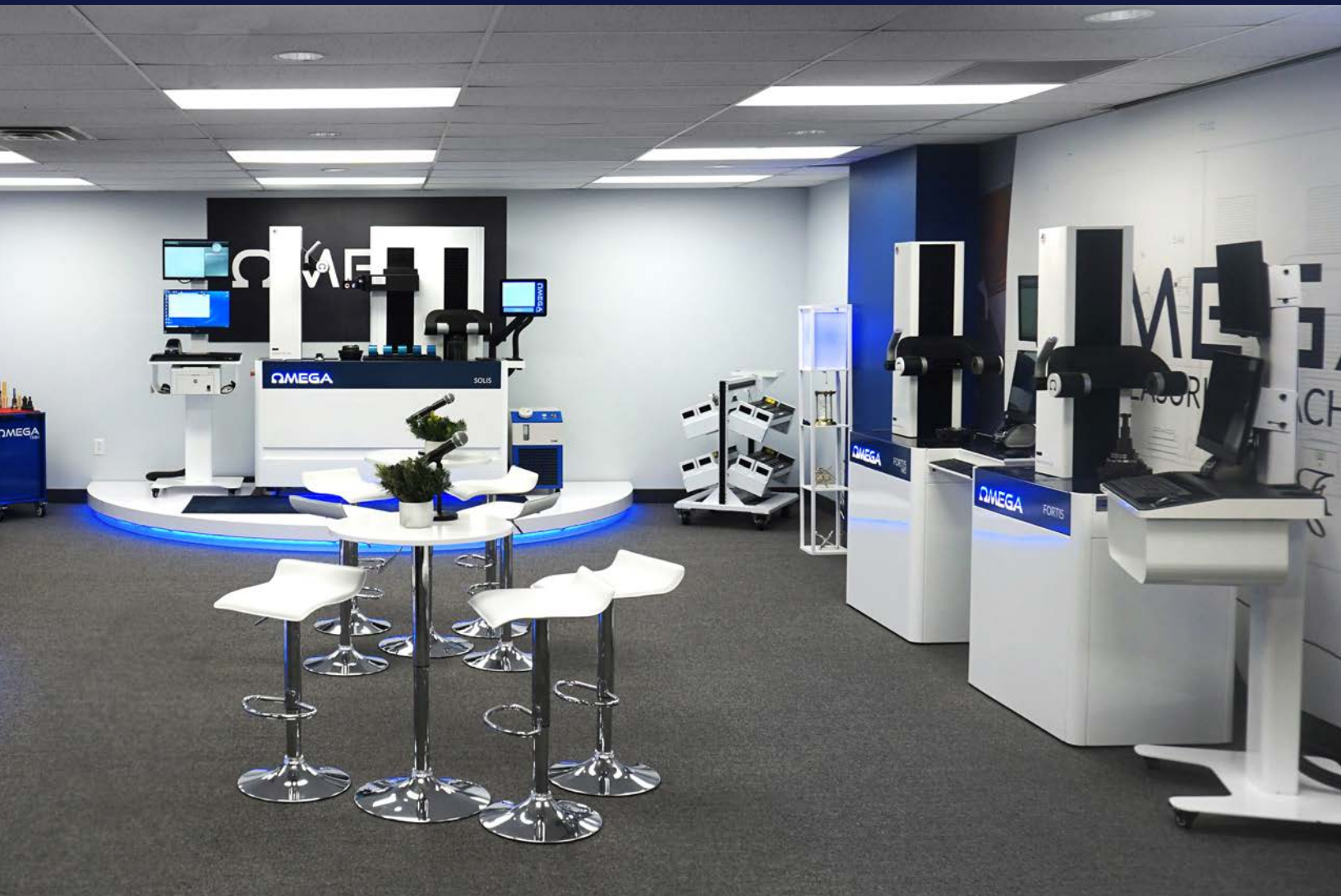


Customer Focused



Certified Trustworthy

The Omega TMM™ “customer-centric” mentality is where it all begins, from research and development to design, from manufacturing to after-sales service, everything we do is laser-focused on creating an outstanding customer experience.



thy



Privately Owned



Award Winning



Live Sales & Service

WORLD

02 | TOOL MEASURING & MANAGEMENT

14 | OUR AMERICAN EXPERIENCE

16 | TECHNOLOGY & INNOVATION

22 | PRESETTERS

52 | SPECIALTY MACHINES

64 | TOOL BALANCER

70 | SOLUTIONS

74 | SOFTWARE

84 | ACCESSORIES

86 | PARTNERSHIPS

88 | ABOUT OMEGA TMM

94 | SALES & SERVICE



CLASS



CONTACT OMEGA TMM

Toll-Free:

1-844-396-5537

Sales:

Sales@omegatmm.com

Service:

Service@omegatmm.com

Address:

101 Perinton Parkway
Fairport, NY 14450

WE ARE YOUR TOTAL SOLUTION

Highly Innovative

Customer-Driven

Made in the USA

Privately Owned Since 1948

Top Workplace Employer

Worldwide Exporter

ISO Certified

We are Omega TMM, the final word in tool presetting, inspection and tool management solutions where our passion is your production. Our machines and solutions are proudly designed, manufactured, and assembled in the USA and are the most accurate, reliable, and repeatable measuring machines for shop floor management on the market. The Omega TMM “customer-centric” mentality is where it all begins, from research and development to design, to manufacturing to after-sales service, everything we do is laser-focused on creating an outstanding customer experience.

GREAT PEOPLE

The most experienced employees in the industry. We invest in our people – our team goes through extensive training to understand your business. Our service people and staff are all located in North America. From the time you first meet with us, we are there to serve you for a lifetime relationship.



DEDICATED PROCESS

We believe in improving the process. From our Big Q meetings to daily 903 meetings – yes, we have a daily meeting to talk about YOU and how we can do it better. Our goal is for you to be 100% satisfied with your purchase. We are committed to you for the long term. Our team of experts will provide you with the right solution for your project.



CUTTING-EDGE TECHNOLOGY

Award winning technology. We listen to your needs and respond whether it is a presetter, inspection machine, accessory or our latest 2D Matrix 4.0 solution. It is all for you to measure precisely, accurately, and more reliably to save you money, time, and let you focus on your real business.



4 REASONS TO CHOOSE OMEGA TMM



1 | MADE IN THE USA

LEARN MORE
ABOUT US

Omega TMM, an American company, is the leading supplier of shop floor solutions. As a global exporter, we play a pivotal role as the only “Made in the USA” company able to provide a complete end to end solution worldwide. Directly servicing Asia and Europe, with partners to operate in other select parts of the world. We have a wholly owned subsidiary in Nanjing, China serving Asia where we export our proudly “Made in the USA” Machines. Ready to partner with us.

2 | FORWARD THINKING

MATRIX 4.0
SOLUTION

Industry 4.0 is optimizing workflows by bringing digitization to the shop floor. We export this technological solution and replicate it as part of the industrial revolution underway. We innovate and create customer-centric solutions to bring a total solution to customers in diverse industries.

3 | CUSTOMER-CENTRIC

LIVE DEMO
CUSTOMER
CENTER

We recently built the *John F. Nuccitelli Center for Customer Excellence* Showroom for YOU! See all our tool measuring machines and management solutions in action. Whether in person or virtually, you can get up close and personal to help you decide which solution meets your needs. Our expert team can answer any of your questions and tailor a demo for you or your entire team prior to making a decision. The Center is also the hub for virtual training, virtual installation and customer meetings.

4 | THE TOTAL SOLUTION

PARTNER WITH
US TODAY

The future of the tool presetting industry lies in the formation of technology partner groups to provide outside the box solutions that are custom tailored to the end users needs. Omega TMM has partnerships with industry leaders such as TDM Solutions™, Caron Engineering™, WinTool™, and True Analytics™. Working together, we each have the end users’ success in mind and it drives us all to innovate, to stay on the cutting edge and to not just offer canned, one-size-fits-all, single source solutions.

A MESSAGE FROM OUR CEO

Thank you for taking a few moments to get to know Omega TMM and what we can do to help you grow your business and drive efficiencies.

Our industry is constantly evolving and so are we. You may have known us for *Parlec™ Presetters* or *Omega Tool Measuring Machines*. As our official name has evolved, our commitment to you has remained the same: to deliver tool measuring and management solutions with the quality and measuring accuracy you expect from a US Manufacturer. We are ready to serve you with all your tool measuring and management solutions now. Whether you are a small job shop or a global manufacturer, we are here to help you with all your tool needs. Our people are the most innovative and responsive to your business needs. In a few simple words: We take measuring to the next level, making sure you stay focused on your core business while we measure microns smarter and easier. Our people are the most experienced and knowledgeable with almost 75 years in the business – we make it simple to do business with and most of all, we are ready to serve you today!

MIKE NUCCITELLI
PRESIDENT + CEO



UNDERSTANDING PRESETTING

Presetting is simply measuring a cutting tool assembly before using it in a machine center.

Machine Centers can measure tools inside the machine itself, but the opportunity cost is that they cannot measure tools and cut parts at the same time. Presetting allows the end-user to measure these tools outside of the Machine Center and cut chips at the same time, which reduces spindle down time through faster changeovers, while increasing the number of machined parts produced.



Who is presetting valuable for?

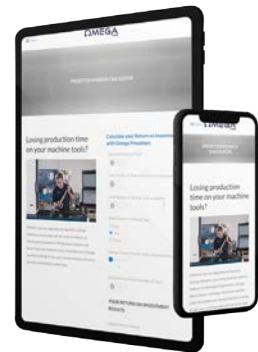
Anyone using CNC machine centers would benefit from presetting their tooling. From small job shops to facilities with millions of square feet on the manufacturing floor, less spindle downtime results in a higher production capacity and more finished parts being shipped out the door.

Why do I need a presetter? I can just touch off my tools in my machine.

You can touch off tools in your machine, but is that the best use of your machining center? Wouldn't you rather have your machining center making chips and making you money? Our tool presetters allow you to measure your tool assemblies off line thus minimizing set up time on your expensive machining center. Our presetters typically have a payback period of less than one year. In addition, our presetters have capabilities beyond what you can measure in a machining center.

How do I see a return from making a presetting investment?

The investment into a presetter pays for itself by increasing the production of each machine tool it supports. With less time spent using your machine tool to measure and touch-off cutting tools, you can spend more time using it to cut chips and make parts. The typical payback on an appropriately optioned presetter is less than one year. We have an interactive ROI calculator where you can input real data and see results based on your current process.



**PRESETTER PAYBACK
CALCULATOR**

How long has Omega TMM been making presetters?

We have been making presetters since 1980 and continue to be the only Presetter made in the USA. From day one we have designed our tool measuring machines to stand up to shop floor environments, and the test of time.



VALUE &
BENEFITS OF
PRESETTING



Measure tooling while your Machine Center is still cutting chips.



Reduce spindle down-time = make more parts.



Machine operators can manage multiple machine centers due to faster change overs.



Measuring tools offline for back up tooling and replacing tooling with minimal down-time.



Qualify tooling before you put it into your machine tool – profile, geometry, etc.



Check for runout, chips, and fractures in tooling before cutting with them.



Accurate micron-measurements for precision machining.



Ensuring the correct tooling makes its way into a machine center means fewer broken parts due to an incorrect or damaged tool.



Automatically manage speed and feed rates, and other custom tooling information in the presetter.

THE HUB OF INNOVATION

The hub of innovation is an abstract term applied to what previously was known as a “tool presetter”. No longer is it a machine to just set tools offline, it is now the “hub” that can manage your entire shop floor. Using an ala carte configuration you can manage stock locations, tooling offsets, assembly and individual component databases, procurement, and more all from one centralized interconnected database.





Efficient Shop Floors

This robust interconnectivity leads to a much more efficient shop floor, increasing spindle uptime and keeping tooling cost at a bare minimum. Having perfect tool assemblies created from existing components not only eliminates time waste but can greatly improve physical waste as well in terms of test cuts and scrapped parts.

What is a connected factory and why do you want it?

Data permeates throughout every process in your facility and the difficulty is harnessing it, understanding it, and knowing how to use it. This may seem like a daunting task but the real question is, where do you start? The first step is to tackle the low hanging fruit: your tooling and its influence on uptime. How do you track your tooling? Where is this data kept? How do you utilize it? In most factories this data is scattered in different locations: the cam department, your

CNC machine control, the tool crib, and possibly spreadsheets or a tool management system. The tool presetter touches all these different departments and is the perfect hub to control all this data. The presetter can not only be the dashboard to manage all the data from these departments but utilizing full 2-way communication via universal protocols like MT Connect the presetter can feed data back to all departments closing the data loop.

VIEWPOINT

— WITH DENNIS QUAID —

OUR 'MADE IN AMERICA' STORY

“Being featured in ***Dennis Quaid's Viewpoint Series*** is not only another key milestone for Omega TMM, but it is a testimonial to all our employees, customers, and business partners who have worked so hard in this industry. Manufacturing is ever changing but one constant is the people who fuel American ingenuity in all industries. We are humbled by the fact that Omega TMM was selected to showcase the manufacturing and tooling industry in action and feature our company to the world. Your success is our success. I hope you will join us on the journey towards the new digital renaissance that starts today.”

-MIKE NUCCITELLI, PRESIDENT & CEO



COMMITMENT TO CUSTOMER EXCELLENCE

Our customers are put first in every aspect from development to manufacturing throughout the entire customer's lifetime. We deliver on our promises and partner with our customers to achieve their key objectives.



CONSISTENT INNOVATION

We continuously improve our products and processes to offer the latest in tool measuring technology and management solutions giving our customers the competitive edge. Recently, we unveiled the new John F. Nuccitelli Center for Customer Excellence to showcase our offerings both virtually and in person to the world.



VISION OF THE FUTURE

Our decades in the global manufacturing industry and knowledge of this market gives us the ability to fulfill our customers' needs when they want it. Our employees and unique culture seek to push the boundaries on Industry 4.0 and beyond.



US MADE COMPANY

We represent a solid, US based company where all our manufacturing and software development starts right here in the US. We are an exporter of our technology and solutions throughout the world and are a shining beacon to students learning in the field of manufacturing, tooling and technology.





TECHNOLOGY

PERFECT SET

The most accurate automated tool height setting available. Utilizing an ultra precise sub 1-micron resolution glass scale encoder users have the ability to accurately set tool heights to +/- 5 microns, the best in the business!

HOLDING RECOGNITION SYSTEM

Utilizing Balluff near-field RFID communication the spindle offsets are automatically adjusted no matter what cartridge or adapter type you are using with no operator action needed.

VIRTUAL CONTROL DEVICE

Utilize a 3D CAD mouse to control all 3 automated axis on your CNC presetter. This hands-off control allows micron precise movement, and increases throughput, while being flexible to accommodate ergonomic challenges. Our VCD has 3 fully programmable “smart buttons” that can be used to complete often used functions with the press of a single button.*

ECHO

The world’s only “learning presetter”! Simply turn on the Echo function, measure your tool and Echo will learn your movements, optimize the program, and create your macro. This is hands down simplest way to program presetting macros on the market. Period.*

AUTOMATED RFID

Read and write RFID tags on your tool holder from any provider with the push of a button.*

*3 axis CNC required

FUNCTION

THE OMEGA TMM PRODUCT LINE IS THE APEX OF THE TERM “WORLD CLASS”

Featuring dual precision ground guideways on each axis, sub-micron resolution glass scales, and double recirculating ball bearings sourced from some of the finest manufacturers in the world.

Reducing operator fatigue, ease of use, and universal fit were our top priorities and we have succeeded! Exhaustive research on grip width, grip length, reach reduction, posture of hand, and more has led us to the development of this ergonomically perfect handle.

LED inspection light to see a live view of your tool.

Our vision system is comprised of three main components for all the heavy lifting, the camera, the backlight, and the image processing. 70x magnification, a collimated backlight, 5MP CMOS sensor and a custom ground bi-telecentric lens gives you the most accurate image in the industry. A touch screen User Interface featuring the latest operating system, processes this image at lightning speed to calculate the most accurate and repeatable measurements possible.

Laser tool finder to easily find the tip or an individual step on your tool.



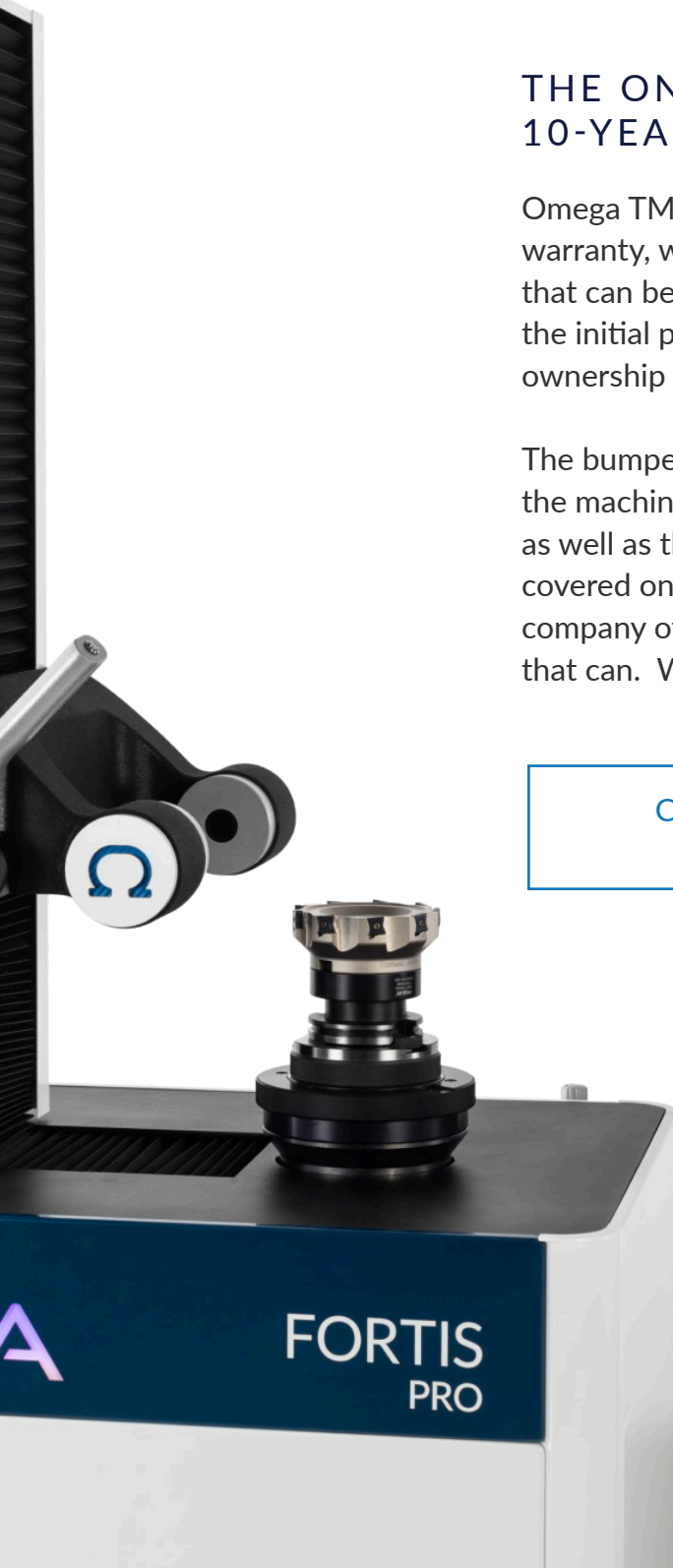
RELIABILITY

THE ONLY PRESETTER LINE WITH A 10-YEAR WARRANTY

Omega TMM offers the only line of Presetters with a 10-year warranty, which includes a 2-year bumper-to-bumper warranty that can be extended to 5-years with annual calibrations. From the initial purchase, you will know your true 5-year cost of ownership with full coverage on any qualifying machine.

The bumper-to-bumper warranty period covers everything on the machine, including mechanical and electrical components, as well as the non-proprietary PC. After this period, parts are covered on a prorated basis out to 10 years. We're the only company offering this warranty because we're the only company that can. We stand by our products, because they're built to last.

CONTACT US FOR WARRANTY DETAILS:
SALES@OMEGATMM.COM



CONNECTIVITY & INDUSTRY 4.0

AN INTEGRAL HUB OF TOOL MANAGEMENT



OMEGA TMM OPTIK SOFTWARE

Simple yet robust with universal connectivity to manage your entire shop floor. This modular system has the ability to grow and adapt as your needs change.

CUSTOMIZABLE FUNCTIONALITY

From basic functions to custom databases, Omega TMM offers flexibility and freedom to suit your individual needs. Robotic cell connectivity, cell controllers, and desktop applications are a few solutions we have used with our extensive customer base.

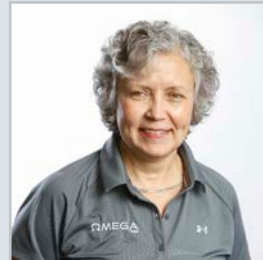
DATA TRANSFER CAPABILITY

Omega TMM is compatible with all platforms from simple bar coding to data output to the most complex RFID systems in the world.

INDUSTRY 4.0 COMPATIBILITY

Omega TMM's team of in-house software engineers is committed to updating software to give the latest in connectivity & compatibility.

“Does Omega TMM develop, test, and support their own software?”



I'm Robin Kowal, one of the software QA Engineers at Omega TMM. I'm proud to work at a company where all the software

development & testing is done in our software lab here in the USA. We test more than any other company. It makes a big difference for you the customer since speed and collaboration are the key to answering your questions real time.

**- ROBIN KOWAL
SOFTWARE QA ENGINEER**

COMPARE

SOLIS

HELIOS

FORTIS

EXACTUS

EVO

PRESETTER COMPANIES

Meet the Presetter: Hub of Innovation

With 12 presetter and inspection system lines, Omega TMM is the final word in presetting and inspection. Our presetter and shrink set machines proudly manufactured and assembled at our USA world headquarters in Fairport, New York, are the most accurate, reliable and repeatable machines on the market. Omega TMM has evolved from decades of leadership in the tool holder and presetter business, formerly known as Parlec Inc.

“Which presetter is right for my business?”

Here at Omega TMM we use a consultative approach to better understand what solutions are right for you and your business process.

Business operations are different at all facilities and Omega TMM can offer a customized solution that specifically fits your business needs.



- RYAN MELEG, EVP SALES










LEGEND	STANDARD	✓
	OPTIONAL	●
	NOT AVAILABLE	✗

3 Axis CNC	STANDARD	✓
Universal Power Clamping Spindle	OPTIONAL	●
Taper 50 Spindle	NOT AVAILABLE	✗
Auto Focus	OPTIONAL	●
Virtual Control Device	OPTIONAL	●
Perfect Set Height Adjustment	OPTIONAL	●
RFID Tool Identification	OPTIONAL	●
Data Output/Post Processing	OPTIONAL	●
AAIM Profiling Software	OPTIONAL	●
Mobile Command Center	OPTIONAL	●



MADE IN THE USA

ARISON

 SOLIS	 HELIOS	 FORTIS	 FORTIS XL	 EXACTUS LITE	 EXACTUS	 EXACTUS XL	 EVO	 EVO+
✓	✓	●	●	×	●	●	×	×
✓	×	✓	✓	×	×	×	×	×
×	✓	×	×	✓	✓	✓	✓	✓
×	×	●	●	×	●	●	×	×
✓	●	●	✓	×	●	✓	×	×
✓	✓	●	●	×	●	●	×	×
●	●	●	●	●	●	●	×	×
●	●	●	●	●	●	●	×	●
✓	●	●	●	×	●	●	×	×
✓	●	●	●	●	●	●	×	×

COMPARE

SOLIS

HELIOS

FORTIS

EXACTUS

EVO

SOLIS





There is only 1 option for a high-volume shop that utilizes heat shrink tooling and requires pinpoint accuracy, the SOLIS from Omega TMM.

PERFECT SET LENGTH RODS

Provides users the ability to set tool height to an industry leading +/- 5 microns.

LIQUID COOLED TOOL TRAY

The first machine in the industry to offer a liquid cooled tray to cool your hot tools.

LENGTH VERIFICATION SPINDLE

Eliminates the use of “masterpiece” sets to reduce your cycle time by more than a minute and a half!

C.H.I.L.L.

Contained Hyper Infrigidated Lossy Liquid cooling system for our revolutionary SOLIS machine. Self contained and maintenance free our C.H.I.L.L. automated cooling system can cool your heat shrink tools to working temperature in 60 seconds.



“We engineered the SOLIS with the goal of outperforming all other machines in the industry, not only did we succeed, we have revolutionized the industry!”

- MIKE BERNITT, DIRECTOR OF OPERATIONS

COMPARE

SOLIS

HELIOS

FORTIS

EXACTUS

EVO

SOLIS

SOLIS is the fastest, most reliable, and most accurate heat shrink and measurement combo PERIOD. Through years of engineering and innovation Omega TMM has developed the ultimate machine to meet your high capacity heat shrink and presetting needs. Cutting edge technology, such as a proprietary self-cooling induction coil shrink head, mean SOLIS is built for continuous shrinking 24/7, making this presetter a real workhorse.



FEATURES

- » C.H.I.L.L. automated 60 second tool cooling
- » Perfect Set provides users the ability to set tool height to an industry leading +/- 5 microns
- » Length Verification Spindle for quick serial shrinking of different length and diameter tools with no extra “masterpiece” step required
- » Virtual Control Device for simple ergonomic use
- » Mobile Command Center rolling kiosk
- » Autofocus CNC Spindle
- » Precision Tool Tip Finder
- » Fume extractor to remove all vapors produced from the heated tool
- » A fully integrated heat shrink and presetting unit
- » Up to 7 full CNC axes
- » Serial shrinking of different tool heights and diameters
- » 70x Magnification lens
- » Pearlitic cast iron construction with our proprietary SYMMETRY design
- » Holding recognition system
- » Liquid cooled tray for hot cutting tools
- » Micron accurate fine adjust
- » Cold Source LED Tool Inspection Light
- » OPTIK Tool Measuring and Management Software Suite
- » 21.5” touch-screen monitor
- » Automated unshrinking of damaged tools
- » Echo
- » AAIM
- » Label printer
- » Kiosk
- » Casters

SPECIFICATIONS

DIMENSIONS & WEIGHT

- » **Length:** 1854mm (73”)
- » **Width:** 813mm (32”)
- » **Height:** 1930mm (76”)
- » **Average Shipping Weight:** 930kg (2050lbs)

MEASURING ENVELOPE

- » **Height:** 600mm
- » **Diameter:** 320mm
- » **Snap Gauge:** 75mm

ACCESSORIES

- » Inch tool sleeves
- » Metric tool sleeves

UTILITIES

- » 120V AC or 220V AC, 50Hz to 63Hz
- » 480V AC 3 phase
- » **Air:** 80-110PSI

OPTIONS

- » Dual 21.5” monitors for tool management window and OPTIK software





COMPARE



SOLIS



HELIOS



FORTIS



EXACTUS



EVO

HELIOS





The HELIOS is the most affordable and well optioned heatshrink/presetting combination on the market. Standard features like 4 axis CNC, tool height setting, liquid chilled cooling collars, and automatic broken tool removal make the HELIOS the market leader in affordable heat shrink technology.

"I'm proud to say Team Omega TMM listened to our customers, doing the impossible in record time in an extraordinary year. Customers will receive top performance from a US based company and superb reliability at a price point that nobody can measure up in the industry."



- MIKE NUCCITELLI, PRESIDENT + CEO

COMPARE

SOLIS

HELIOS

FORTIS

EXACTUS

EVO

HELIOS

HELIOS is the most affordable and well optioned heat shrink and presetting combination on the market, HANDS DOWN. Standard features like 5 axis CNC, tool height setting, liquid chilled cooling collars, and automatic broken tool removal make the HELIOS the market leader in affordable heat shrink technology.



FEATURES

- » C.H.I.L.L. automated 60 second tool cooling
- » Perfect Set provides users the ability to set tool height to an industry leading +/- 20 microns (patent pending)
- » No extra “masterpiece” step required
- » Autofocus CNC Spindle
- » Precision Tool Tip Finder to easily find your tool tip
- » Fume extractor to remove all vapors produced from the heated tool
- » A fully integrated heat shrink and presetting unit
- » Up to 5 full CNC axes
- » Serial shrinking of different tool heights and diameters
- » Pearlitic cast iron construction with our proprietary SYMMETRY design
- » Liquid cooled tray for hot cutting tools
- » Micron accurate fine adjust
- » OPTIK Tool Measuring and Management Software Suite
- » Cold Source LED Tool Inspection Light
- » 21.5” touch-screen monitor
- » Automated unshrinking of damaged tools
- » Casters

SPECIFICATIONS

DIMENSIONS & WEIGHT

- » **Length:** 1854mm (73”)
- » **Width:** 813mm (32”)
- » **Height:** 1930mm (76”)
- » **Average Shipping Weight:** 930kg (2050lbs)

MEASURING ENVELOPE

- » **Height:** 600mm
- » **Diameter:** 320mm
- » **Snap Gauge:** 75mm

UTILITIES

- » 120V AC or 220V AC, 50Hz to 63Hz
- » 480V AC 3 phase
- » **Air:** 80-110PSI

OPTIONS

- » Dual 21.5” monitors for tool management window and OPTIK software
- » Label printer



COMPARE

SOLIS

HELIOS

FORTIS

EXACTUS

EVO

FORTIS



FORTIS

With a combined clamping force of over 1,300ft/lbs, the FORTIS Series are the most repeatable measuring machines on the market.



FORTIS PRO

Featuring full 3 axis CNC along with incredible clamping force the FORTIS PRO is an industry leader.



FORTIS XL

The FORTIS-XL can handle heights and diameters up to 1000mm and with a 1000lb spindle capacity it can measure any tool in your arsenal.



FORTIS XL PRO

When measuring large tooling, the full 3 axis cnc on the FORTIS XL PRO makes your job simple, repeatable, and reliable.

COMPARE

SOLIS

HELIOS

FORTIS

EXACTUS

EVO

FORTIS

With over 600ft/lbs of power-clamping spindle force the FORTIS is one of the most repeatable measuring machines on the market.



FEATURES

- » 600ft/lbs universal power clamping spindle with interchangeable cartridge system to work with any tool holding type
- » Integrated spindle brake and 360° indexing
- » 1 micron repeatable measuring
- » Shop floor ready, full size freestanding machine
- » Spindle weight capacity of over 200lbs
- » Precision Tool Tip Finder
- » Cold Source LED Tool Inspection Light
- » Robust easy to use control interface
- » Instantly finds tool geometries
- » Theoretical intersection points
- » Fixed or Dynamic cross-hairs
- » OPTIK Tool Measuring and Management Software Suite
- » 10.5" touch-screen all-in-one monitor
- » Pearlitic cast iron construction with our proprietary SYMMETRY design
- » 70x Magnification lens

SPECIFICATIONS

DIMENSIONS AND WEIGHT

- » **Overall Width:** 1575mm (62")
- » **Depth:** 813mm (32")
- » **Height:**
 - 400mm Column (1730mm / 68")
 - 600mm Column (1930mm / 76")
 - 800mm Column (2130mm / 84")

- » **Average Shipping Weight:** 522kg (1150lbs.)

MEASURING DIAMETERS

- » 420mm (16.5")

UTILITIES

- » 120V AC or 220V AC, 50Hz to 63Hz
- » **Air:** 80-110PSI

OPTIONS

MEASURING LENGTHS

- » 400mm (15.75")
- » 600mm (23.6")
- » 800mm (31.5")

- » Rolling Kiosk

OPTIONS

- » Autofocus CNC Spindle
- » Upgrade to 21.5" touch screen all-in-one
- » Dual monitors for tool management window and OPTIK software
- » Environmental Enclosure
- » Label printer
- » Laser printer

CONTROL SYSTEM OPTIONS

- » Manual and automated RFID systems
- » Mazak Cyber Tool and Smooth Tool Management system integration
- » Data output
- » Holder recognition system
- » Perfect Set, AAIM, and ECHO software modules
- » Virtual control device
- » User management

UPGRADE TO FORTIS PRO

- » System is full 3 axis CNC automation



COMPARE

SOLIS

HELIOS

FORTIS

EXACTUS

EVO

FORTIS XL

The FORTIS-XL can handle heights and diameters up to 1000mm and with a 1000lb spindle capacity it can measure any tool in your arsenal.



FEATURES

- » 600ft/lbs universal power clamping spindle with interchangeable cartridge system to work with any tool holding type
- » Integrated spindle brake and 360° indexing
- » Simple to use 3D VCD with programmable smart buttons
- » 1 micron repeatable measuring
- » Shop floor ready, full size freestanding machine
- » Spindle weight capacity of over 1000lbs
- » Precision Tool Tip Finder
- » Cold Source LED Tool Inspection Light
- » Robust easy to use control interface
- » Pearlitic cast iron construction with our proprietary SYMMETRY design
- » Instantly finds tool geometries
- » Theoretical intersection points
- » Fixed or Dynamic cross-hairs
- » OPTIK Tool Measuring and Management Software Suite
- » 21.5" touch-screen monitor
- » 70x Magnification lens
- » Casters

SPECIFICATIONS

DIMENSIONS AND WEIGHT

- » **Overall Width:** 1838mm (72.4")
- » **Depth:** 701mm (27.6")
- » **Height:**
600mm Column (1948mm/76.7")
1000 mm Column (2342mm/93.2")
- » **Average Shipping Weight:** 1020 kg (2240 lbs.)

MEASURING DIAMETERS

- » 420 mm (16.5")

UTILITIES

- » 120V AC or 220V AC, 50Hz to 63Hz
- » **Air:** 80-110PSI

OPTIONS

MEASURING LENGTHS

- » 650mm - 1000mm Length
- » 650mm - 1000mm Diameter

CONTROL SYSTEM OPTIONS

- » Manual and automated RFID systems
- » Mazak Cyber Tool and Smooth Tool Management system integration
- » Data output
- » Perfect Set, AAIM, and ECHO software modules
- » Holder recognition system

- » User management
- » Snap Gauge: 100mm

OPTIONS

- » Auto-focus CNC Spindle
- » Dual 21.5" monitors for tool management window and OPTIK software
- » Label printer

UPGRADE TO FORTIS XL PRO

- » System is full 3 axis CNC automation



COMPARE

SOLIS

HELIOS

FORTIS

EXACTUS

EVO

EXACTUS



EXACTUS LITE

Easy to use, accurate, and robust. The EXACTUS line can transform your production efficiency from good to world class.



EXACTUS

Accurate, repeatable, and reliable. The EXACTUS has the ability to handle any job you can throw at it with simplicity and ease.



EXACTUS PRO

Featuring 3 axis automation, the EXACTUS PRO removes the element of human error from your process.



EXACTUS XL

With the EXACTUS XL there is no job too big or too heavy with up to 1000mm measuring capability and 650lb spindle capacity.



EXACTUS XL PRO

3 Axis automation along with incredible measuring capabilities the EXACTUS XL PRO will make even the most difficult toll setup simple and precise.

COMPARE

SOLIS

HELIOS

FORTIS

EXACTUS

EVO

EXACTUS LITE

Need accurate measurements straight from your workbench?
The EXACTUS LITE tabletop machine is your answer.



FEATURES

- » Precision ground taper 50 spindle
- » Adapters available for all tool holding types
- » 1 micron repeatable measuring
- » Vacuum clamping
- » Shop floor ready
- » Precision Tool Tip Finder
- » Cold Source LED Tool Inspection Light
- » Robust easy to use control interface
- » Pearlitic cast iron construction with our proprietary SYMMETRY design
- » Instantly finds tool geometries
- » Theoretical intersection points
- » Fixed or Dynamic cross-hairs
- » OPTIK Tool Measuring and Management Software Suite
- » 10.5" touch-screen monitor
- » 70x Magnification lens

SPECIFICATIONS

DIMENSIONS AND WEIGHT

- » **Overall Width:** 748mm (30")
- » **Depth:** 527mm (21")
- » **Height:**
 - 400mm Column (890mm/ 35")
 - 600mm Column (1115mm/44")
 - 800mm Column (1315mm/42")
- » **Average Shipping Weight:** 272 kg (600 lbs.)

UTILITIES

- » 120V AC or 220V AC, 50Hz to 63Hz
- » **Air:** 80-110PSI

OPTIONS

MEASURING LENGTHS

- » 400mm (15.75")
- » 600mm (23.6")
- » 800mm (31.5")

CONTROL SYSTEM OPTIONS

- » Manual RFID systems
- » Mazak Cyber Tool and Smooth Tool Management system integration
- » Data output
- » User management and document manager
- » Template Tracking

OPTIONS

- » Upgrade to 21.5" touch screen monitor
- » Dual monitors for tool management window and OPTIK software
- » Label printer
- » *Shown with optional solid maple top workbench



COMPARE

SOLIS

HELIOS

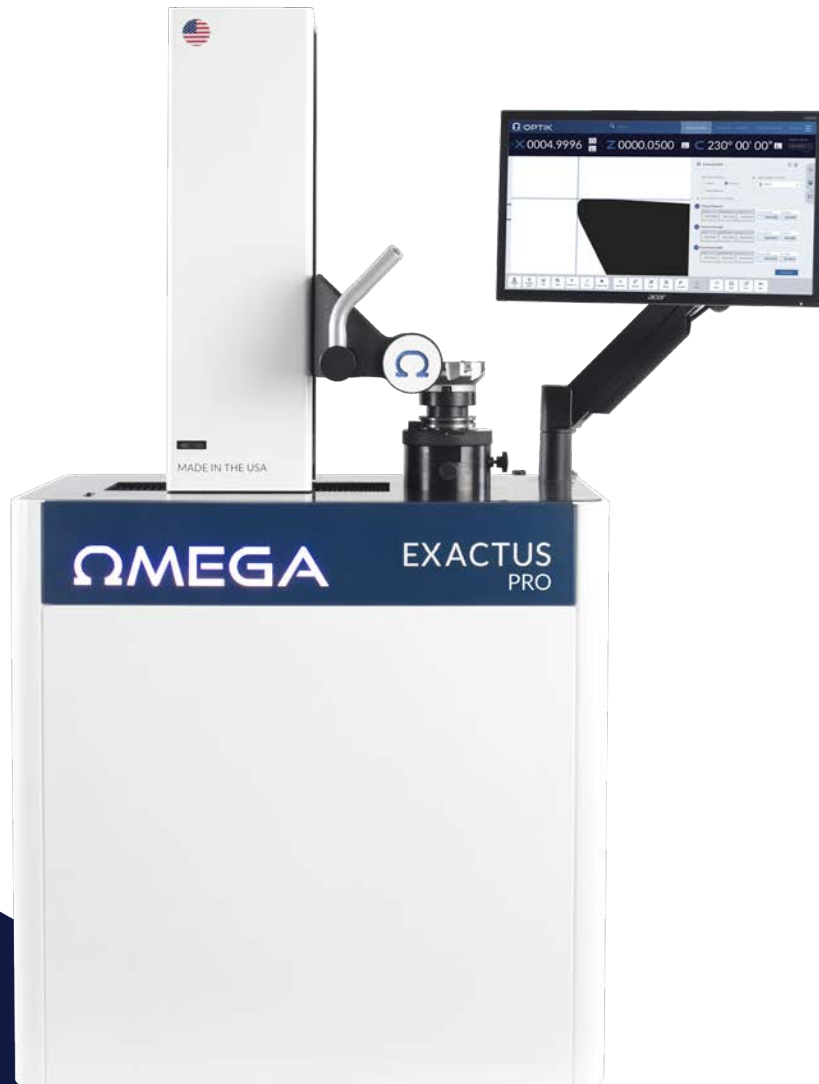
FORTIS

EXACTUS

EVO

EXACTUS

Easy to use, accurate, and robust. The EXACTUS line can transform your production efficiency from good to world class.



FEATURES

- » Precision ground taper 50 spindle
- » Adapters available for all tool holding types
- » 1 micron repeatable measuring
- » Vacuum clamping
- » Shop floor ready full size freestanding machine
- » Precision Tool Tip Finder
- » Cold Source LED Tool Inspection Light
- » Robust easy to use control interface
- » Pearlitic cast iron construction with our proprietary SYMMETRY design
- » Instantly finds tool geometries
- » Theoretical intersection points
- » Fixed or Dynamic cross-hairs
- » 21.5" touch-screen monitor
- » Label printer
- » 70x Magnification lens

SPECIFICATIONS

DIMENSIONS AND WEIGHT

- » **Overall Width:** 1575mm (62")
- » **Depth:** 813mm (32")
- » **Height:**
 - 400mm Column (1730 mm / 68")
 - 600mm Column (1930 mm / 76")
 - 800mm Column (2130 mm / 84")
- » **Average Shipping Weight:**
 - 522kg (1150lbs.)

MEASURING DIAMETERS

- » 420 mm (16.5")

UTILITIES

- » 120V AC or 220V AC, 50Hz to 63Hz
- » **Air:** 80-110PSI

OPTIONS

MEASURING LENGTHS

- » 400mm Column (13.75")
- » 600mm Column (23.6")
- » 800mm Column (31.5")

CONTROL SYSTEM OPTIONS

- » OPTIK user interface
- » Manual and automated RFID systems
- » Mazak Cyber Tool and Smooth Tool Management system integration
- » Data output

- » Perfect Set, AAIM, and ECHO software modules
- » Virtual control device
- » User management

OPTIONS

- » Autofocus CNC Spindle
- » Dual 21.5" monitors for tool management window and OPTIK software

UPGRADE TO FORTIS PRO

- » System is full 3 axis CNC automation



COMPARE

SOLIS

HELIOS

FORTIS

EXACTUS

EVO

EXACTUS XL

Cast iron construction with our proprietary SYMMETRY design, our innovative virtual control device, and multiple spindle options make the EXACTUS-XL the definition of the word “heavyweight”.



FEATURES

- » Precision ground taper 50 spindle
- » Integrated spindle brake and 360° indexing
- » Simple to use 3D Virtual Control Device with programmable smart buttons
- » Shop floor ready, full size freestanding machine
- » Precision Tool Tip Finder
- » Cold Source LED Tool Inspection Light
- » Robust easy to use control interface
- » Pearlitic cast iron construction with our proprietary SYMMETRY design
- » Instantly finds tool geometries
- » Theoretical intersection points
- » Fixed or Dynamic cross-hairs
- » OPTIK Tool Measuring and Management Software Suite
- » 21.5" touch-screen monitor
- » 70x Magnification lens
- » Casters

SPECIFICATIONS

DIMENSIONS AND WEIGHT

- » **Overall Width:** 1838mm (72.4")
- » **Depth:** 701mm (27.6")
- » **Height:**
600mm Column (1948 mm/76.7")
1000mm Column (2342mm/93.2")
- » **Average Shipping Weight:** 1020kg (2240lbs.)

UTILITIES

- » 120V AC or 220V AC, 50Hz to 63Hz
- » **Air:** 80-110PSI

OPTIONS

MEASURING LENGTHS

- » 650mm - 1000mm Length
- » 650mm - 950mm Diameter

CONTROL SYSTEM OPTIONS

- » Manual and automated RFID systems
- » Mazak Cyber Tool and Smooth Tool Management system integration
- » Data output
- » Perfect Set, AAIM, and ECHO software modules
- » Taper 60 spindle
- » HSK 125a spindle

- » User management

OPTIONS

- » Autofocus CNC Spindle
- » Dual 21.5" monitors for tool management window and OPTIK software
- » Label printer
- » Virtual control device

UPGRADE TO EXACTUS XL PRO

- » System is full 3 axis CNC automation



COMPARE

SOLIS

HELIOS

FORTIS

EXACTUS

EVO

EVO



EVO



EVO+

“What customers benefit from the new EVO?”

The EVO was designed with the operator in mind. We’ve made it completely customizable and easy to use, while still providing a ton of features. Whether the customer is new to presetting or has used presettlers for years they’re going to love the new EVO and EVO+.



- ALEX MADDOX, SERVICE MANAGER



MADE IN THE USA

MEET EVO – THE ENTRY LEVEL PRESTTERS

The EVO and EVO+ are the most accurate, repeatable and reliable entry-level presetters on the market.

Standard features include a cast iron construction, an 10.5” touch screen and a match-ground, 50-taper spindle.

The EVO+ version enables users to communicate tooling offsets directly to their machine tool with the click of a button. Both machines offer the ability to personalize the outside with a custom vinyl wrap offering different logos, with one option being an American flag wrap to protect the machine from the shop floor environment.



← ASK US ABOUT
CUSTOM BRANDING!

COMPARE

SOLIS

HELIOS

FORTIS

EXACTUS

EVO

EVO

Using the latest software and mechanical technologies, the all-new EVO is the easiest, most accurate entry-level machine, targeted to any industry.



FEATURES

- » Pearlitic cast iron base with proprietary SYMMETRY design
- » Precision match ground taper 50 spindle
- » Integrated spindle brake
- » LED surface inspection light
- » NEW and improved EVO control system with new software
- » 10.5" High-res PixelSense™ touch screen
- » 20x magnification
- » Self-balanced counter weight design that requires no shop air
- » Shop floor ready with rigid steel exterior
- » 1-year parts & labor warranty

SPECIFICATIONS

DIMENSIONS AND WEIGHT

- » **Overall width:** 760mm (30")
- » **Depth:** 521mm (20.5")
- » **Height:** 927mm (36.5")
- » **Average Shipping Weight:** 159kg (350lbs)

MEASURING ENVELOPE

- » 400mm (15.75") Height
- » 250mm (10") Diameter

UTILITIES

- » 120V AC or 220V AC, 50 Hz to 60 Hz

OPTIONS

ACCESSORIES

- » Label Printer
- » Industrial Grade Maple Bench
- » Custom Vinyl Wrapping
- » UPS Battery Backup

UPGRADE

- » 21.5" touch screen monitor

CUSTOMIZABLE DESIGNS

Choose from a selection of available designs or work with our design team to customize an EVO with your own branding & protect from environmental elements.



COMPARE

SOLIS

HELIOS

FORTIS

EXACTUS

EVO

EVO+

Using the latest software and mechanical technologies, the all-new EVO+ is the easiest, most accurate entry-level machine, capable of electronically transmitting tool measurements to your manufacturing operations.



FEATURES

- » Pearlitic cast iron base with proprietary SYMMETRY design
- » Precision match ground taper 50 spindle
- » Integrated spindle brake
- » LED surface inspection light
- » Precision laser tool tip finder
- » NEW and improved EVO control system with new software
- » 21.5" Touch screen
- » 42x magnification
- » Self-balanced counter weight design that requires no shop air
- » Shop floor ready with rigid steel exterior
- » 1-year parts & labor warranty

SPECIFICATIONS

DIMENSIONS AND WEIGHT

- » **Overall width:** 760mm (30")
- » **Depth:** 521mm (20.5")
- » **Height:** 927mm (36.5")
- » **Average Shipping Weight:** 159kg (350lbs)

MEASURING ENVELOPE

- » 400mm (15.75") Height
- » 250mm (10") Diameter

UTILITIES

- » 120V AC or 220V AC, 50 Hz to 60 Hz

OPTIONS

ACCESSORIES

- » Label Printer
- » Industrial Grade Maple Bench
- » Custom Vinyl Wrapping
- » UPS Battery Backup

CUSTOMIZABLE DESIGNS

Choose from a selection of available designs or work with our design team to customize an EVO+ with your own branding & protect from environmental elements.




COMPARE


APEX


MICRO


VERI-GRIND


VERI-GRIND LITE


SHRINKSET

SPECIALTY MACHINES

Specialty Machines

Omega TMM has created a lineup of industry specific measuring and induction machines to meet the specific needs of our customers. From glass grinding, to metal cutting, to stone grinding, rest assured Omega TMM has your needs covered.

LEGEND	STANDARD	<input checked="" type="checkbox"/>
	OPTIONAL	<input type="checkbox"/>
	NOT AVAILABLE	<input type="checkbox"/>

3 Axis CNC

Universal Power Clamping Spindle

Taper 50 Spindle

Virtual Control Device

Perfect Set Height Adjustment

RFID Tool Identification





Data Output/ Post Processing

AAIM Profiling Software

Mobile Command Center



LINE LINEUP

 APEX	 MICRO	 VERI-GRIND	 VERI-GRIND LITE
<input checked="" type="checkbox"/>	<input checked="" type="checkbox"/>	<input checked="" type="checkbox"/>	<input type="checkbox"/>
<input checked="" type="checkbox"/>	<input checked="" type="checkbox"/>	<input type="checkbox"/>	<input type="checkbox"/>
<input type="checkbox"/>	<input type="checkbox"/>	<input checked="" type="checkbox"/>	<input checked="" type="checkbox"/>
<input checked="" type="checkbox"/>	<input checked="" type="checkbox"/>	<input type="checkbox"/>	<input type="checkbox"/>
<input type="checkbox"/>	<input type="checkbox"/>	<input type="checkbox"/>	<input type="checkbox"/>
<input type="checkbox"/>	<input type="checkbox"/>	<input type="checkbox"/>	<input type="checkbox"/>
<input checked="" type="checkbox"/>	<input type="checkbox"/>	<input checked="" type="checkbox"/>	<input type="checkbox"/>
<input checked="" type="checkbox"/>	<input checked="" type="checkbox"/>	<input type="checkbox"/>	<input type="checkbox"/>

COMPARE

APEX

MICRO

VERI-GRIND

VERI-GRIND LITE

SHRINKSET

APEX

Reflection and dirt are the enemies of creating an accurate tool profile. Our APEX machine features a full environmental enclosure with an automated light diffuser to make sure your tools are kept safe from the perils of the shop floor. The APEX can profile all types of tools or grinding wheels for any industry using our AAIM software creating the perfect DXF for comparison or export. Whether it is basic presetting or profiling wheels or form tools the APEX is a world class machine.



FEATURES

- » Fully integrated environmental enclosure with auto-retracting light diffuser
- » OPTIK Tool Measuring and Management Software Suite
- » AAIM profiling software
- » User management
- » Echo
- » Autofocus CNC Spindle
- » Instantly finds tool geometries
- » Theoretical intersection points
- » Fixed or Dynamic cross-hairs
- » 21.5" touch-screen monitor
- » Virtual Control Device
- » 70x Magnification Lens
- » +600lb/ft universal power clamping spindle with interchangeable cartridge system to work with any tool holding type
- » Pearlitic cast iron construction with our proprietary SYMMETRY design
- » Integrated spindle brake and 360° indexing
- » 1 micron repeatable measuring
- » Shop floor ready, full size freestanding machine
- » Precision Tool Tip Finder
- » Cold Source LED Tool Inspection Light
- » Robust easy to use control interface
- » Laser printer
- » Kiosk

SPECIFICATIONS

DIMENSIONS AND WEIGHT

- » Length: 939.8 mm (37")
- » Width: 1168.4mm (46")
- » Height: 1828.8mm (72")
- » Weight: 475kg (1046lbs)

MEASURING ENVELOPE

- » 600mm Height
- » 420mm Diameter
- » 100mm Snap Gauge

UTILITIES

- » 120V AC or 220V AC, 50Hz to 63Hz
- » **Air:** 80-110PSI

OPTIONS

- » Holder Recognition System
- » Automated RFID
- » Data output
- » Perfect Set automated tool height system
- » Mazak Cyber Tool and Smooth Tool Management system integration
- » Dual 21.5" monitors for tool management window and OPTIK software
- » Label printer



COMPARE

APEX

MICRO

VERI-GRIND

VERI-GRIND LITE

SHRINKSET

MICRO

Developed specifically for micro tools and micro features. With an industry-leading 300x lens, the MICRO presetter can measure even the most microscopic features repeatedly and accurately.

If your process requires the use of micro tooling from endmills and drills to super abrasive grinding tools. The 300x lens on the Omega TMM MICRO will ensure a crisp image with industry leading accuracy to set your tools.



FEATURES

- » Fully integrated environmental enclosure with auto-retracting light diffuser
- » 300x magnification bi-telecentric lensing
- » 600+ lb/ft universal power clamping spindle with interchangeable cartridge system to work with any tool holding type
- » Integrated spindle brake and 360° indexing
- » 1 micron or less repeatable measuring
- » Shop floor ready, full size freestanding machine
- » Autofocus CNC Spindle
- » Precision Tool Tip Finder
- » Cold Source LED Tool Inspection Light
- » OPTIK Tool Measuring and Management Software Suite
- » AAIM Profiling Software
- » ECHO
- » Virtual Control Device
- » Robust easy to use control interface
- » Pearlitic cast iron construction with our proprietary SYMMETRY design
- » 21.5" touch screen monitor
- » 3-Axis CNC
- » Label printer
- » Kiosk

SPECIFICATIONS

DIMENSIONS AND WEIGHT

- » **Overall Width:** 1575mm (62")
- » **Depth:** 813mm (32")
- » **Height:** 600mm Column (1730mm / 68")
- » **Average Shipping Weight:** 522kg (1150lbs.)

MEASURING DIAMETERS

- » 420mm (16.5")

UTILITIES

- » 120V AC or 220V AC, 50Hz to 63Hz
- » **Air:** 80-110PSI

OPTIONS

CONTROL SYSTEM OPTIONS

- » Manual and automated RFID systems
- » Mazak Cyber Tool and Smooth
- » Tool Management system integration
- » Data output

- » Perfect Set automated tool height system
- » Holding recognition system
- » Laser printer



"There is no other presetting machine available on the market that can come close to the accuracy and repeatability of the Omega TMM MICRO on even your smallest of tooling."

- MIKE BERNITT, DIRECTOR OF OPERATIONS



COMPARE

APEX

MICRO

VERI-GRIND

VERI-GRIND LITE

SHRINKSET

VERI-GRIND

The VERI-GRIND is the benchmark for grinding wheel form and offset verification in both the metal cutting and stone grinding industries.



FEATURES

- » Instantly finds tool and wheel geometries
- » Theoretical intersection points
- » Fixed or Dynamic cross-hairs
- » OPTIK Tool Measuring and Management Software Suite
- » 21.5" touch-screen monitor
- » Autofocus CNC Spindle
- » Precision ground taper 50 spindle
- » Adapters available for all tool holding types
- » 1 micron repeatable measuring
- » Vacuum clamping
- » Pearlitic cast iron construction with our proprietary SYMMETRY design
- » Shop floor ready full size freestanding machine
- » Precision Tool Tip Finder
- » Cold Source LED Tool Inspection Light
- » Robust easy to use control interface
- » AAIM profiling software with tolerance banding
- » 70x Magnification lens
- » P50-40 Adapter

SPECIFICATIONS

MEASURING DIMENSIONS

- » 420mm (16.5") Diameter
- » 400mm (15.75") Height

UTILITIES

- » 120V AC or 220V AC, 50Hz to 63Hz
- » **Air:** 80-110PSI

DIMENSIONS AND WEIGHT

- » **Overall Width:** 1575mm (62")
- » **Depth:** 813mm (32")
- » **Average Shipping Weight:** 522kg (1150lbs.)

OPTIONS

CONTROL SYSTEM OPTIONS

- » Automated or manual RFID
- » Data output
- » Document manager
- » User management
- » Echo
- » Dual 21.5" monitors
- » Label printer
- » Laser printer



COMPARE

APEX

MICRO

VERI-GRIND

VERI-GRIND LITE

SHRINKSET

VERI-GRIND LITE

VERI-GRIND LITE is the cost-effective bench-top solution for grinding wheel verification.



FEATURES

- » Precision ground taper 50 spindle
- » Adapters available for all tool holding types
- » Template tracking to verify wheel forms
- » 1 micron repeatable measuring
- » Vacuum clamping
- » Shop floor ready
- » Precision Tool Tip Finder
- » Cold Source LED Tool Inspection Light
- » Pearlitic cast iron construction with our proprietary SYMMETRY design
- » Robust easy to use control interface
- » Instantly finds tool geometries
- » Theoretical intersection points
- » Fixed or Dynamic cross-hairs
- » OPTIK Tool Measuring and Management Software Suite
- » 21.5" touch-screen monitor
- » 70x Magnification lens

SPECIFICATIONS

MEASURING DIMENSIONS

- » 420mm (16.5") Diameter
- » 400mm (15.75") Height

UTILITIES

- » 120V AC or 220V AC, 50Hz to 63Hz
- » **Air:** 80-110PSI

DIMENSIONS AND WEIGHT

- » **Overall Width:** 748mm (30")
- » **Depth:** 527mm (21")
- » **Machine Height:**
 - 400mm Column (890mm/ 35")
 - 600mm Column (1115mm/44")
 - 800mm Column (1315mm/42")
- » **Average Shipping Weight:** 272kg (600lbs.)

OPTIONS

OPTIONS

- » Manual RFID systems
- » Data output
- » Dual 21.5" monitors
- » Label printer
- » *Shown with optional solid maple top workbench



COMPARE

APEX

MICRO

VERI-GRIND

VERI-GRIND LITE

SHRINKSET

SHRINKSET

Shrink/remove and cool your tools automatically with the press of a button.



FEATURES

- » 480v power supply
- » Oscillating air cooling (*SHRINKSET and SHRINKSET LITE*)
- » Lightning-fast quench cooling (*SHRINKSET Pro*)
- » Adapters and stop discs for multiple tool types are included
- » Automated Cooling Cycle
- » Easy to use full color LCD touch-screen display
- » Automated Heat Cycle
- » Manufactured, assembled, and supported in the U.S.A.

ACCESSORIES AVAILABLE

- » Solid Maple Top Workbench

SHRINKSET LITE

- » **Machine Type:** Compact Tabletop
- » **Heating Time:** <5 Seconds
- » **Cooling Time:** 2 Minutes
- » **Cooling Type:** Oscillating Air
- » **Tool Size:**
Max Length: 280mm/533mm with Ext. (11"/21")
Max Diameter: 3mm-32mm (1/8"-1 1/4")
- » **Adapters Included:**
HSK100/63/50/40
CAT50/40/30
Capto C6

SHRINKSET

- » **Machine Type:** Full-Size Tabletop
- » **Heating Time:** <5 Seconds
- » **Cooling Time:** 2 Minutes
- » **Cooling Type:** Oscillating Air
- » **Tool Size:**
Max Length: 560mm (22")
Max Diameter: 3mm-32mm (1/8"-1 1/4")
- » **Adapters Included:**
HSK100/63/50/40
CAT50/40/30
Capto C6

SHRINKSET PRO

- » **Machine Type:** Freestanding Machine
- » **Heating Time:** <5 Seconds
- » **Cooling Time:** 30 Seconds
- » **Cooling Type:** Auto Quench
- » **Tool Size:**
Max Length: 560mm (22")
Max Diameter: 3mm-32mm (1/8"-1 1/4")
- » **Adapters Included:**
HSK100/63/50/40
CAT50/40/30
Capto C6



TOOL BALANCER

The Dynamic Duo of Tool Balancers and Presetters

In the intricate world of machining, two seemingly distinct components, tool balancers and presetters, converge to form a symbiotic partnership that significantly enhances machining efficiency. At Omega TMM, we're thrilled to introduce our latest innovation, the STATERA tool balancer, a true game-changer that seamlessly complements our precision-focused presetters. This dynamic duo offers a host of compelling advantages, delivering not only enhanced performance but also optimized workflow.

STRIKING THE PERFECT BALANCE

Achieving optimal balance is paramount for achieving peak machining performance. The STATERA tool balancer plays a crucial role in ensuring that each tool operates with impeccable balance, effectively minimizing vibrations and mitigating stress on machinery. This pivotal feature translates into extended tool lifespan, reduced wear and tear, and, ultimately, the production of higher quality machining results.





BALANCER



STATERA

PRECISION AMPLIFIED WITH PRESETTERS

Our presetters have long been recognized for their exceptional accuracy, streamlining tool setup processes and significantly boosting machining efficiency. When paired with the STATERA tool balancer, this precision is taken to new heights. Tools that are pre-balanced by the STATERA undergo meticulous measurement and setup in our presetters, fostering an amalgamation of accuracy and balance that culminates in unmatched machining excellence.

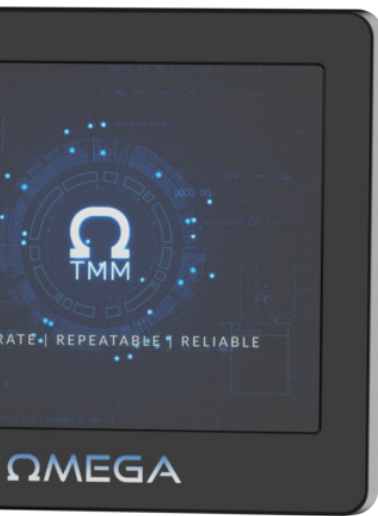
THE INNER WORKINGS OF STATERA

The STATERA tool balancer, an essential component in precision machining, ensures tools are in equilibrium. It achieves this by meticulously adjusting their weight distribution, preventing vibrations and stress during operation. STATERA employs single-plane static and dual-plane dynamic balancing techniques for accuracy. Its durable steel-based construction and transparent manual door guarantee safety on the shop floor. Controlled by a 17" touch screen, STATERA stores balancing programs and displays unbalance values, angular positions, and correction prompts at the end of each cycle. With features like precise unbalanced point indication, dual calibration modes, and adaptable balancing grades, STATERA elevates machining efficiency while promoting machine longevity.



ELEVATING EFFICIENCY – THE POWER OF SYNERGY

In the realm of machining, efficiency is the cornerstone of success. This is precisely where the harmonious alliance of tool balancers and presetters, embodied by the STATERA from Omega TMM, truly shines. This fusion of cutting-edge technologies offers a range of benefits that contribute to elevating your machining processes:



Prolonged Tool Longevity

The STATERA tool balancer's impeccable balance significantly reduces wear on tools, translating into an extended lifespan and a noticeable reduction in replacement costs, thereby optimizing your budget.

Heightened Machining Quality

The intricate balance achieved through the STATERA's precision contributes to superior machining outcomes. Tools that are meticulously balanced, accurately measured, and expertly set guarantee tighter tolerances and consistent, high-quality results.

Reduced Machinery Strain

The balanced state of tools directly alleviates the strain placed on machinery during operation. This results in minimized vibrations and stress on machine components, leading to smoother operation and decreased maintenance requirements over time.

Seamless Workflow

The seamless integration of STATERA-balanced tools with our presetters doesn't merely optimize your machining processes; it revolutionizes them. This unified approach expedites tool setup, enhances overall machining efficiency, and maintains the exceptional accuracy that Omega TMM is renowned for.

EMPOWERING MACHINING EXCELLENCE

In the landscape of manufacturing, precision is the ultimate goal. The fusion of tool balancers and presetters epitomizes this precision, delivering a robust toolkit to achieve top-tier machining outcomes. With Omega TMM's STATERA tool balancer and presetters at your disposal, you're equipped to take your machining excellence to unparalleled heights. Experience the power of precision, efficiency, and innovation with Omega TMM's STATERA and presetters by your side.



BALANCER



STATERA

STATERA

STATERA, Omega TMM's cutting-edge tool balancer, revolutionizes machining by ensuring optimal tool balance. Its precision-driven technology minimizes vibrations, extends tool life, and enhances overall machining excellence, making it an indispensable asset for precision-focused industries.

Seamlessly integrated with any presetter in Omega's lineup, STATERA elevates your tool setup process to new heights of efficiency and accuracy.



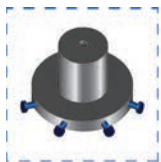
FEATURES

- » Single plane static balancing
- » Dual plane dynamic balancing
- » Mechanical clamping
- » Pneumatic unclamping
- » Coupling seat suited to many kinds of adapters
- » Precise unbalanced point indicator light
- » Steel-based construction, with components built to withstand the shop floor environment
- » Transparent manual door and safety lock
- » 17" touch screen control

SOFTWARE FEATURES

- » Storage of the balancing program within user-friendly database
- » Allows user to see the out of balance angular position in reference to the rotor
- » Dual modes for calibration: self-learning mode or dimensional mode (setting of the correction planes position and correction radii.)
- » Enter balancing grade, rotor weight, and speed to calculate the unbalance threshold
- » Utilizes customer's specific balancing grades
- » Displays the following at the end of a cycle:
 - » *Unbalance value in set measuring unit*
 - » *Angular position of the unbalance*
 - » *Prompts to correct the unbalance (drilling, milling, etc.)*

PROGRAMS TO CORRECT UNBALANCE



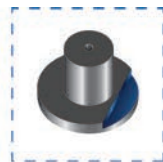
Displace pre-defined points of radial mass



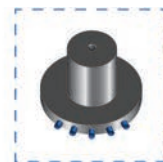
Drill defined points



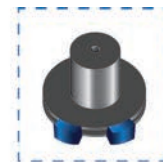
Contour milling



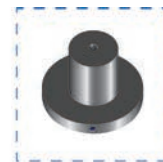
Tangential milling



Tighten or loosen grub screws



Displace two masses



Drill on free position

TECHNICAL

- » Max tool diameter: 400mm (15.75")
- » Max tool height: 550mm (21.7")
- » Max rotor weight: 20kg (44 lbs.)
- » Motor power: 0.1kw
- » Max speed: 800 Rpm
- » Air: 90 psi
- » Weight: 240 kg / 530 lbs.
- » Power: 220V 1 phase, 50-60 Hz

OPTIONS, ADAPTERS, ISO

ADAPTERS:

- » ISO 30/40/50
- » HSK 32 ACE/40 BDF
- » HSK 40 ACE/50 BDF
- » HSK 50 ACE/63 BDF
- » HSK 63 ACE/80 BDF
- » HSK 80 AC/100 BD
- » HSK 100 AC/125 BD

OPTIONS:

- » Thermal printer
- » Data transfer via ethernet

SOLUTIONS

A Giant Leap Towards Complete Interconnectivity

Matrix 4.0, robotic solutions, automated tool vending, CAM integration, total tool management, and Turn-key custom applications are just a few of the ways Omega TMM can help you gain efficiency and create an interconnected factory. Every Smart Factory solution that is provided by Omega TMM is completely customized to meet and exceed your expectations!

SOLUTIONS MADE EASY.

Feel confident that our decades of experience, from working with Top 100 clients all the way to small startups give you the edge that you are investing in a company who will be with you every step of the way. We know the shop floor well. We work on behalf of you to pull in the right partners who have been vetted and tested throughout the tool management life cycle. Our goal is to simplify the way work gets done and get you the right solution to what you are trying to solve. Remember we know tool measuring since we created it over 40 years ago.



MADE IN THE USA



MATRIX 4.0

Matrix 4.0 is the most robust cost-effective solution on the market to move toward secure tooling data management.

The Omega TMM Matrix 4.0 system provides universal direct connectivity to safely upload machine tool offsets with minimal human interaction. Multiple checks and balances provide piece of mind that you have the right tool in the right pocket in the correct machine tool.

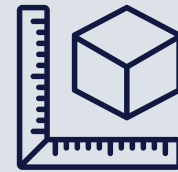


ADVANTAGES

- » Universal - 2-Way Direct Communication Via Ethernet
 - » *Keyboard emulator not required*
 - » *Works with any CNC machine control*
- » Data Transfer - Process Control
 - » *Mitigates operator error, removes the human element of typing in offsets*
 - » *Fewer broken tools and non-conforming parts*
- » Reliable, secure system that creates repeatable tool management ecosystem
 - » *Increase efficiency and uptime*
- » Open System - Platform compatible with multiple manufacturers
 - » *Ability for additional IOs supported*
- » Software developed and supported in the USA
 - » *Quick response to support your operations*

HIGHLIGHTS

- » 2D Matrix Scanning
 - » *Powered by Caron Engineering Tool Connect*
 - » *Full service provided by our team of certified technicians*
- » Durable and Shop Floor Ready
 - » *Configured to your exact requirements*
- » Customized to Your Shop Floor
 - » *A no-cost shop floor assessment to identify your individual needs*
- » Compatible with ANY Presetter
- » Two-Way Communication



MEASURE TOOL

Capture tool data and print matrix code



SCAN MATRIX CODE

Optional hands-free scanning



PLACE TOOL IN CNC

Ready to use



SOFTWARE

Software Solutions

YOUR GATEWAY TO PERFECTION

All Omega TMM software is designed and written by our in-house Software Team. Our software team has always been involved in everything from product design to working with the service team at a customer site, even custom integrations. We develop our software for the end-users, and in each new update or platform release, user feedback and ease of use is the central pillar.

Our team works right here in the USA, out of our Global Headquarters in Fairport, NY.

User friendly yet robust, our OPTIK software suite is designed for productivity. Intuitive function and an elegant, no-nonsense, user interface make Omega TMM the easiest to use on the market.





MADE IN THE USA



TMM OPTIK

MEASURING AND INSPECTION SOFTWARE

FAST
USER-FRIENDLY
SCALABLE
SECURE
VIBRANT

Optik is designed with flexibility, upgraded performance, and a responsive, customizable user interface.

Optik uses the latest technologies, with modularity of features and a sleek, modernized user interface all on one screen. Easier to train, easier to learn, uniform across different machines.



Capture X, Z, radii and angles in real time



Data is sent to RFID systems and machine controls



Clean and informative reporting



Efficient and accurate built-in routines



Mechanical components move at your fingertips



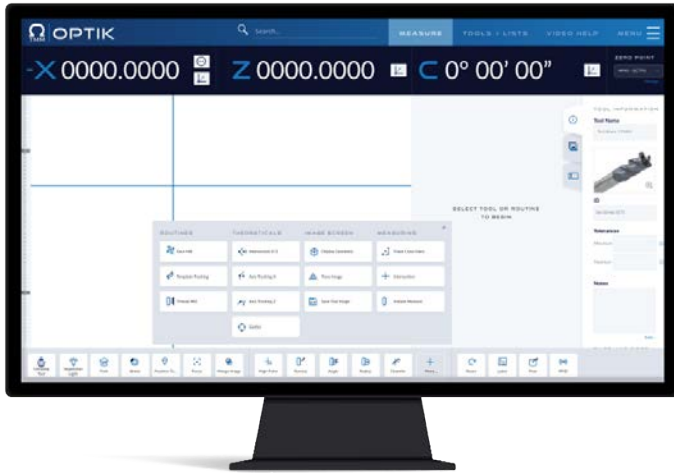
NEXT GENERATION MEASURING SOFTWARE



SOFTWARE

OPTIK

MODULES



INTUITIVE & RELIABLE CUSTOMIZABLE ROUTINES

Optik is adaptable to integrate with any third party software. Easy drag & drop features with powerful best in breed tool measuring software across all presetter models.

“Can I upgrade my current software version?”

“Depending on your current Omega TMM presetter, you may be eligible to upgrade. Contact our sales department for a free assessment to see if your hardware is compatible with Optik.”

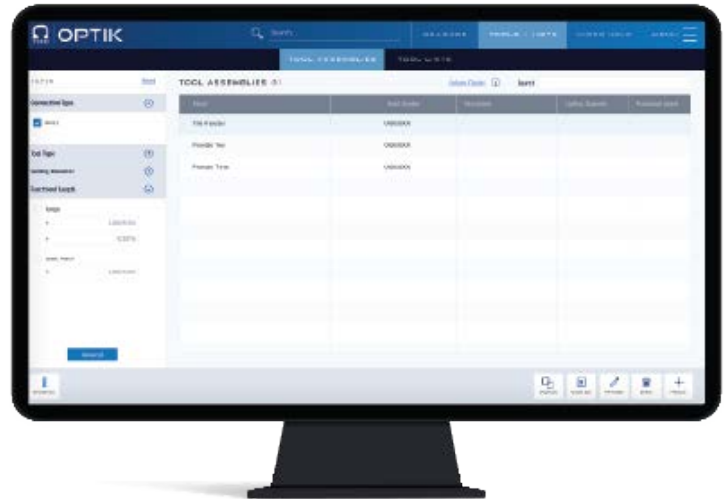
- MIKE BERNITT, DIRECTOR OF OPERATIONS



CONTACT US FOR MORE INFORMATION
SALES@OMEGATMM.COM

AUTOMATION-READY TOOL MANAGEMENT

Optik's architecture allows you to quickly develop solutions for automatic, repeatable measuring routines and macros, integrated and adaptable to any of our partners' shop floors.



DESIGNED, DEVELOPED, & SUPPORTED IN-HOUSE

Talk to our in-house software team about all your software questions - they've got solutions.

We are Omega TMM – World-class tool measuring and management solutions, where our passion is your production. Our shop floor management solutions, presetter and shrink set machines, proudly manufactured and assembled at our Fairport, NY world headquarters, are the most accurate, reliable, and repeatable measuring machines on the market. Everything we do is laser-focused on creating an outstanding customer experience. We welcome the chance to assist in making your manufacturing facility truly world class.



MODULES

AAIM

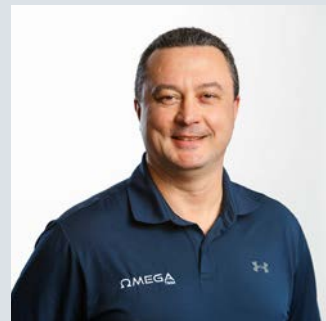
Automated Analysis Inspection and Measurement software allows you to verify profiles and the most difficult forms with ease. Our fully automated imaging software will create a 2+ million point cloud to generate a micron precise DXF for overlay or export. Robust features like tolerance bands, nominal vs. actual comparison, and shadow delete make AAIM your number one choice for all your profiling needs. (3 axis CNC required)

MACRO

The world's only "learning presetter"! Simply turn on the Echo function, measure your tool and Echo will learn your movements, optimize the program, and create your macro. This is hands down the simplest way to program presetting macros on the market. Period. (3 axis CNC required) The Omega TMM Macro module allows users to create automated measuring routines to fit their process and their needs. Our Macro Builder uses an intuitive drag-and-drop canvas to select customizable commands, allowing users to build routines that can be applied to a single tool or an entire class of tooling. A Macro can be fully automated on a Presetter equipped with 3-Axis CNC, or can give step-by-step measurement instructions on a manual machine with an Autofocus spindle.

"Optik is a huge step forward, not just for Omega TMM but for the presetter industry as a whole. Many competitors will try to replicate what we have done but with continued innovation we will always be three steps ahead."

- TIM SHOR, DIRECTOR OF SOFTWARE ENGINEERING



VERI-GRIND SOFTWARE

The VERI-GRIND module and VERI-GRIND machines were created to capture tool profiles and automatically align multiple profiles in a set. Within the module, the cutting profile is captured for one or multiple tools in a set. These profiles are then layered and can be automatically adjusted using the “Best Fit” feature, which will take into account the thickness of material being grinded, and will position each tool to achieve the desired profile. The tool measurements can be printed, posted, or written to the tool via RFID and loaded into the machine center, ready for production.

POST PROCESSOR

The Post Processor in OPTIK allows for one-way communication from the OPTIK database directly to a machine center controller, to update data such as tool offsets and supporting information. The Omega TMM Applications team can write custom post templates to integrate to a machine center that allows for a process that does not depend on users manually typing data into the controller. Mitigating the opportunity for user error results in fewer mistakes like mistyped offset values, while at the same time allowing for the immediate transfer of all information that would alternatively need to be manually entered or updated each time a tool is loaded.

RFID

Omega TMM Presetters can transmit data to an RFID chip either manually or with our fully automated RFID system. When a machine center utilizes RFID to maintain and update tool data and information, transmitting tool offset values and other information from the Presetter to the RFID chip on the tool holder is the best way to input this data. When appropriately equipped, an Omega TMM Presetter can automatically identify a tool in the spindle by reading the RFID tag, immediately run an automatic measuring routine, and then write specific tool data back to the RFID tag with the click of a single button.



Custom Interfaces & 3rd Party Integrations

OPTIK supports a range of integration options with 3rd party providers, which can include RFID hardware, tooling databases, and machine control systems.

Our in-house Software team can design and build custom interfaces for one-off solutions or to meet specific needs. Whether the machine needs to communicate with an automated robot for lights-out operation, or if a shop uses a machine center with a unique control, we can create a custom interface if necessary to provide communication and make the process as efficient as possible.

CONTACT US FOR CUSTOM INTEGRATIONS:
SALES@OMEGATMM.COM



ACCESSORIES & U



TAPER 50 ADAPTERS

Adapt your taper 50 machine to work with any type of tool holder.

- » All taper types
- » ABS
- » Big Plus
- » Clamping HSK
- » Clamping Capto
- » Clamping KM
- » VDI



CLAMPING CARTRIDGES

All cartridges are universal clamping giving you 600+ ft/lbs of pull force on every tool.

- » All taper types
- » ABS
- » Big Plus
- » Clamping HSK
- » Clamping Capto
- » Clamping KM
- » VDI



CERTIFIED TEST BARS

- » 50 taper: 50mm diameter 150mm projection
- » 50 taper: 50mm diameter 300mm projection
- » 50 taper: 50mm diameter 450mm projection



ZERO GAUGES

- » 50 taper: 50mm diameter 75mm projection



MADE IN THE USA

P GRADES



BLUE UNDERGLOW

- » Available on all floor models
- » Dress up your shop by adding a blue glow that will make your Omega TMM the most recognizable machine on the shop floor

WORKBENCH

- » Mounting table-top machines

TECH STANDS

- » Available with dual-monitor setup

ALL AVAILABLE ACCESSORIES

- » Tool tray
- » Cartridge tray
- » Accessory tray
- » Printer
- » Tabletop
- » Holder Recognition System (HRS)
- » Perfect Set
- » Automated RFID
- » Virtual Control Device (VCD)
- » Measuring Sleeves for SOLIS
- » Mazak Cybertool
- » Mobile Command Kiosk
- » Self-Leveling Casters

CUSTOM VINYL WRAPS

- » Available on all presetter models
- » Choose from a selection of available designs or work with our design team to customize a vinyl wrap with your own branding & protect your machine from environmental elements

BUILDING
FOR YOU



NG PARTNERSHIPS UR SUCCESS



At Omega TMM, we strive to build partnerships based on the challenges you see every day on the shop floor. Improving your efficiency guarantees you time and money savings while making you the vendor of choice. Your success starts by surrounding yourself with partners who work together to take the guesswork out of production by combining many years of knowledge and experience to make you the industry leader.

[CONTACT US TO FORM
A PARTNERSHIP TODAY](#)

WE ARE OMEGA TMM

We are Omega TMM, the final word in Tool Measuring and Management Solutions, where our passion is your production.

Our machines, proudly manufactured and assembled at our Fairport, NY, world headquarters, are the most accurate, reliable, and repeatable measuring machines on the market. The Omega TMM “customer centric” mentality is where it all begins, from research and development to design, to manufacturing to after sales service, everything we do is laser focused on creating an outstanding customer experience. Now, and for the foreseeable future, Omega TMM is the benchmark to which all other machines are compared and we welcome the chance to assist in making your manufacturing facility truly world class.



Omega TMM can improve efficiency and help you successfully compete in the marketplace of both today and tomorrow. Our products and solutions showcase the best in design, engineering, and manufacturing to produce the most accurate and reliable tool measuring systems in the world. As we pursue our commitment to researching new technologies, Omega TMM will continue to set new standards in precision tool measuring systems while providing our customers with the highest level of support and service.



7
OF

1948

PARLEC
FOUNDED

Launches into tool
measuring industry

1980

FIRST
PRESETTER

Parlec introduced first
presetter onto the market

2006

WORLDWIDE
EXPANSION

Corporate offices open
in Nanjing, China

2017

OMEGA TMM
LAUNCHES

Parlec transitions presetter
division to Omega TMM

2020

EXPANSION +
SOLUTIONS

Innovative machine
progress and solutions

2022

LAUNCHES AT
IMTS2022

Introducing OPTIK,
EVO, and EVO+

'23-24

75 YEARS OF
PRESETTING

Continual innovation



FAIRPORT, NY

Our culture is filled with employees who are engaged, appreciated and recognized. We have a proven track record with years of experience in measuring and tool management. As a Top Workplace, we hold each other accountable, take initiative and put YOU the customer first.



5 YEARS
HISTORY



OUR QUALITY PROMISE



To build and maintain a profitable company that meets the needs of our employees and shareholders by providing products and services that make us the supplier of choice to our customers.

Our Customers

Being the supplier of choice by exceeding both internal and external customer expectations in every interaction.

Innovation

Individual initiative to continuously improve the processes and products throughout the organization.

Process Discipline

Driving quality by adhering to established processes.

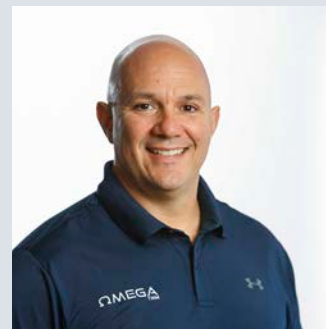
Professionalism

Respect for the work environment and the company culture.

Safety

We are committed to a clean, organized, and safe workspace.

“How important is quality in your manufacturing process?”



“We at Omega TMM see quality as a company-wide strategy. Quality is everyone’s job. We

take it very seriously. Not only are we ISO 9001 certified but our goal is to get ahead of any problem to ensure you the best tool measuring machine and solution lasting longer than any warranty. On that note, we still have the best warranty in the industry.”

- MIKE BERNITT, DIRECTOR OF OPERATIONS

JOHN F. NUCCITELLI CENTER FOR CUSTOMER EXCELLENCE



Virtual Training
and Installation



Virtual and
In-Person Demos



RFQ Meetings and
Collab Events



Take advantage of our state of the art, [John F. Nuccitelli Center for Customer Excellence](#) located in our Omega TMM corporate headquarters in Fairport, New York, showcasing the best of our tool measuring and management solutions.

See all our presetters, inspection machines, accessories, and tool solutions up & close. The customer center is designed with YOU, the customer, in mind to see machines and solutions in action and getting all your questions answered from our experienced, on-site demo team. We can even pull in the experts from our hardware, software, and assembly departments at a moment's notice.

Why was the center named after John F. Nuccitelli?

Over half century ago, John F. Nuccitelli, father of Mike Nuccitelli, CEO of Omega TMM brought innovation, growth and achievements to our industry. John cared deeply about our customers and wanted to make sure the customer knew exactly what they were getting before the sale. We honor John's passion for this excellence today and bestow this honor for us.

Request Virtual Demo

Check out our offering in real time. Move from the digital brochure to our virtual demo. Our high quality cameras bring you close to the action.

[REQUEST A DEMO TODAY:
SALES@OMEGATMM.COM](mailto:SALES@OMEGATMM.COM)





GLOBAL SALES

Omega TMM prides itself on being the only US manufacturer of tool presetters and we stand behind our machines with the best warranty in the industry. With thousands of tool measuring machines in service today, we have built our reputation by providing world-class service to extend the life of your presetter and tool inspection machines.

We are committed to giving you a competitive quote anywhere in the world. Our ability to serve you near your location is another reason to check us out.

Omega TMM is a global leader in tool measuring and management solutions. We are the only US Tool presetter company and have a major presence in North America serving all 50 states, most Canadian provinces, and a major presence in Mexico. Our Omega TMM China headquarters serves Asia Pacific.

OUR PRESETTERS AND INSPECTION MACHINES ARE MADE IN THE USA AND EXPORTED AROUND THE WORLD.

ES & SUPPORT



CONTACT SALES DEPARTMENT

Contact us to learn more about available machines, accessories, software and general questions.

P: 1-844-396-5537 Press 2

E: Sales@omegatmm.com

Find your sales manager by state:
www.omegatmm.com/sales

SERVICE

KEEPING YOUR MACHINE
IN PRISTINE CONDITION IS
OUR #1 GOAL.



We have experienced and dedicated service team ready to support you in any way based on your needs and conditions. Our team goes through an extensive training program and understands that each business, small, medium or large needs to be up and running fast. Their ability to respond quickly and to be at your location with parts in hand when you need them is our primary goal.

When you purchase a product or service from Omega TMM, you are also buying the peace of mind that our service techs are ethical, professional, and capable of getting the job done the first time. Our service people and support staff are all located within North America. In most cases, service personnel can be on-location within a few business days.

CONTACT OUR SERVICE DEPARTMENT

P: 1-844-396-5537 Press 1

E: Service@OmegaTMM.com

On-Demand Machine Maintenance and Service



On-Location faster than
anyone in the industry



Live Virtual Sessions



Same-Day Phone Service

ANNUAL CALIBRATION

You have made a significant investment in purchasing the best tool presetter on the market. Keep it performing at its optimal levels by getting it calibrated.

You wouldn't invest in an expensive piece of equipment, such as a CMM, without a calibration contract. Trust us with your tool measuring machines or inspection systems. Our factory trained certified service technicians will calibrate your presetter using a Renishaw Laser Interferometer® to ensure micron level accuracy. Our lasers are calibrated annually and the calibration service on your presetter includes an official label and certificate for your ISO compliance records.



Consistent Measurements



Increased Throughput



Longer Machine Life



Less Machine Downtime

**REQUEST SERVICE/CALIBRATION:
SERVICE@OMEGATMM.COM**

“Is Omega TMM’s customer service outsourced?”

Omega TMM maintains the best customer service by keeping our customer service team within the national headquarters location in Fairport, NY. When you call the office, we are happy to say that you will be immediately connected to one of our many tool presetting and inspection experts.

“I have a Parlec™ presetter, can it be serviced or upgraded?”

Omega TMM continues to service and support Parlec presetters. We know them better than anyone since we evolved from Parlec who started in 1948. Upgrade options are available on some models improving your existing machine. Contact us today for a no risk evaluation.

PARLEC

OUR PROMISE TO YOU

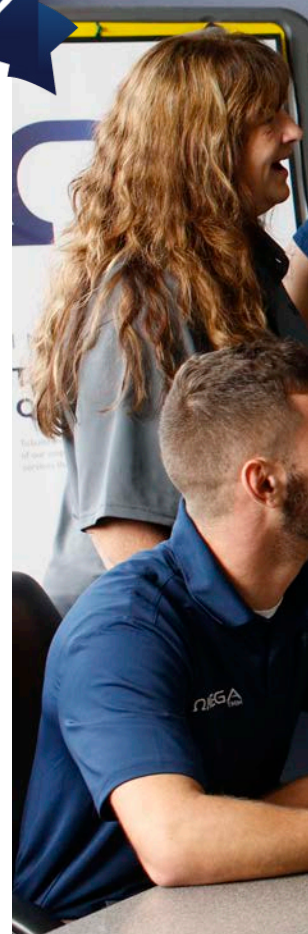


A 10-year Warranty

Proving we are committed to providing a high level of quality, dependability and reliability.

Again, congratulations on your purchase of an Omega TMM machine, and be assured you made the best decision. Omega TMM prides itself on being the only US manufacturer of tool presetters and backs our machines with the best warranty in the industry. With thousands of machines in service today, we have built our reputation by providing world class service to extend the life of your presetter. Omega TMM has evolved from decades of leadership in the tool holder and presetter business, now run exclusively under the Omega TMM brand.

CONTACT US TODAY:
SALES@OMEGATMM.COM



“We here at Omega TMM take great pride in working with you, our customers, to provide a complete solution that assists you in making your processes as lean as possible. ***We want you to be 100% satisfied with your purchase and we are committed to you for the long term.*** Your success is our success. Our team of experts will provide you the right solution for your project, increasing your productivity and lowering your scrap rate.

That’s our promise to you.”





MADE IN THE USA



FOLLOW US:



©Omega TMM, 2024. All Rights Reserved

*Branded product and company names are trademarks™ or registered® trademarks of their respective holders. Use of them does not imply any affiliation with or endorsement by them.

SALES

Contact us to learn more about available machines, accessories, software and general questions.

P: 1-844-396-5537 Press 2

E: Sales@omegatmm.com

Find your sales manager by state:
www.omegatmm.com/sales

SERVICE DEPARTMENT

Customer service for machinery maintenance and repairs is available by phone, or on-location technicians.

P: 1-844-396-5537 Press 1

E: Service@omegatmm.com

Find Service tips and key contact form:
www.omegatmm.com/sales/service

CALIBRATION SCHEDULING

We highly recommend annual calibration service by an Omega TMM service expert. Call to schedule your next calibration:

P: 1-844-396-5537 Press 1

E: Service@omegatmm.com

RESOURCES & PRESETTER TRAINING

Take advantage of additional resources and training videos on your new presetter.

Find useful resources at:
www.omegatmm.com/resources-downloads

VIRTUAL EVENTS & DEMOS

Our 'John F. Nuccitelli Center for Customer Excellence' hosts live events covering product demos, technology updates and more! No cost! Schedule one today.

P: 1-844-396-5537

E: Sales@OmegaTMM.com

ISO & CALIBRATION CERTIFICATES

Available upon request. Please contact us with your specific needs and our Customer Service team will deliver as needed.

P: 1-844-396-5537 Press 1

E: Service@OmegaTMM.com