



ΩMEGA TMM

2024 CATALOG

WORLD CLASS TOOL MEASURING
AND MANAGEMENT SOLUTIONS



MADE TO MEASURE
MADE IN THE USA





PRESETTER COMPARE

Meet the Presetter: Hub of Innovation

With 12 presetter and inspection system lines, Omega TMM is the final word in presetting and inspection. Our presetter and shrink set machines proudly manufactured and assembled at our USA world headquarters in Fairport, New York, are the most accurate, reliable and repeatable machines on the market. Omega TMM has evolved from decades of leadership in the tool holder and presetter business, formerly known as Parlec Inc.

“Which presetter is right for my business?”

Here at Omega TMM we use a consultative approach to better understand what solutions are right for you and your business process.

Business operations are different at all facilities and Omega TMM can offer a customized solution that specifically fits your business needs.



- RYAN MELEG, EVP SALES










LEGEND	STANDARD	<input checked="" type="checkbox"/>
	OPTIONAL	<input type="checkbox"/>
	NOT AVAILABLE	<input type="checkbox"/>

3 Axis CNC	STANDARD	<input checked="" type="checkbox"/>
Universal Power Clamping Spindle	OPTIONAL	<input type="checkbox"/>
Taper 50 Spindle	NOT AVAILABLE	<input type="checkbox"/>
Auto Focus	OPTIONAL	<input type="checkbox"/>
Virtual Control Device	OPTIONAL	<input type="checkbox"/>
Perfect Set Height Adjustment	OPTIONAL	<input type="checkbox"/>
RFID Tool Identification	OPTIONAL	<input type="checkbox"/>
Data Output/Post Processing	OPTIONAL	<input type="checkbox"/>
AAIM Profiling Software	OPTIONAL	<input type="checkbox"/>
Mobile Command Center	OPTIONAL	<input type="checkbox"/>



MADE IN THE USA

ARISON

 SOLIS	 HELIOS	 FORTIS	 FORTIS XL	 EXACTUS LITE	 EXACTUS	 EXACTUS XL	 EVO	 EVO+
✓	✓	●	●	×	●	●	×	×
✓	×	✓	✓	×	×	×	×	×
×	✓	×	×	✓	✓	✓	✓	✓
×	×	●	●	×	●	●	×	×
✓	●	●	✓	×	●	✓	×	×
✓	✓	●	●	×	●	●	×	×
●	●	●	●	●	●	●	×	×
●	●	●	●	●	●	●	×	●
✓	●	●	●	×	●	●	×	×
✓	●	●	●	●	●	●	×	×

COMPARE

SOLIS

HELIOS

FORTIS

EXACTUS

EVO

SOLIS





There is only 1 option for a high-volume shop that utilizes heat shrink tooling and requires pinpoint accuracy, the SOLIS from Omega TMM.

PERFECT SET LENGTH RODS

Provides users the ability to set tool height to an industry leading +/- 5 microns.

LIQUID COOLED TOOL TRAY

The first machine in the industry to offer a liquid cooled tray to cool your hot tools.

LENGTH VERIFICATION SPINDLE

Eliminates the use of “masterpiece” sets to reduce your cycle time by more than a minute and a half!

C.H.I.L.L.

Contained Hyper Infrigidated Lossy Liquid cooling system for our revolutionary SOLIS machine. Self contained and maintenance free our C.H.I.L.L. automated cooling system can cool your heat shrink tools to working temperature in 60 seconds.



“We engineered the SOLIS with the goal of outperforming all other machines in the industry, not only did we succeed, we have revolutionized the industry!”

- MIKE BERNITT, DIRECTOR OF OPERATIONS

COMPARE

SOLIS

HELIOS

FORTIS

EXACTUS

EVO

SOLIS

SOLIS is the fastest, most reliable, and most accurate heat shrink and measurement combo PERIOD. Through years of engineering and innovation Omega TMM has developed the ultimate machine to meet your high capacity heat shrink and presetting needs. Cutting edge technology, such as a proprietary self-cooling induction coil shrink head, mean SOLIS is built for continuous shrinking 24/7, making this presetter a real workhorse.



FEATURES

- » C.H.I.L.L. automated 60 second tool cooling
- » Perfect Set provides users the ability to set tool height to an industry leading +/- 5 microns
- » Length Verification Spindle for quick serial shrinking of different length and diameter tools with no extra “masterpiece” step required
- » Virtual Control Device for simple ergonomic use
- » Mobile Command Center rolling kiosk
- » Autofocus CNC Spindle
- » Precision Tool Tip Finder
- » Fume extractor to remove all vapors produced from the heated tool
- » A fully integrated heat shrink and presetting unit
- » Up to 7 full CNC axes
- » Serial shrinking of different tool heights and diameters
- » 70x Magnification lens
- » Pearlitic cast iron construction with our proprietary SYMMETRY design
- » Holding recognition system
- » Liquid cooled tray for hot cutting tools
- » Micron accurate fine adjust
- » Cold Source LED Tool Inspection Light
- » OPTIK Tool Measuring and Management Software Suite
- » 21.5” touch-screen monitor
- » Automated unshrinking of damaged tools
- » Echo
- » AAIM
- » Label printer
- » Kiosk
- » Casters

SPECIFICATIONS

DIMENSIONS & WEIGHT

- » **Length:** 1854mm (73”)
- » **Width:** 813mm (32”)
- » **Height:** 1930mm (76”)
- » **Average Shipping Weight:** 930kg (2050lbs)

MEASURING ENVELOPE

- » **Height:** 600mm
- » **Diameter:** 320mm
- » **Snap Gauge:** 75mm

ACCESSORIES

- » Inch tool sleeves
- » Metric tool sleeves

UTILITIES

- » 120V AC or 220V AC, 50Hz to 63Hz
- » 480V AC 3 phase
- » **Air:** 80-110PSI

OPTIONS

- » Dual 21.5” monitors for tool management window and OPTIK software





COMPARE



SOLIS



HELIOS



FORTIS



EXACTUS



EVO

HELIOS





The HELIOS is the most affordable and well optioned heatshrink/presetting combination on the market. Standard features like 4 axis CNC, tool height setting, liquid chilled cooling collars, and automatic broken tool removal make the HELIOS the market leader in affordable heat shrink technology.

"I'm proud to say Team Omega TMM listened to our customers, doing the impossible in record time in an extraordinary year. Customers will receive top performance from a US based company and superb reliability at a price point that nobody can measure up in the industry."



- MIKE NUCCITELLI, PRESIDENT + CEO

COMPARE

SOLIS

HELIOS

FORTIS

EXACTUS

EVO

HELIOS

HELIOS is the most affordable and well optioned heat shrink and presetting combination on the market, HANDS DOWN. Standard features like 5 axis CNC, tool height setting, liquid chilled cooling collars, and automatic broken tool removal make the HELIOS the market leader in affordable heat shrink technology.



FEATURES

- » C.H.I.L.L. automated 60 second tool cooling
- » Perfect Set provides users the ability to set tool height to an industry leading +/- 20 microns (patent pending)
- » No extra “masterpiece” step required
- » Autofocus CNC Spindle
- » Precision Tool Tip Finder to easily find your tool tip
- » Fume extractor to remove all vapors produced from the heated tool
- » A fully integrated heat shrink and presetting unit
- » Up to 5 full CNC axes
- » Serial shrinking of different tool heights and diameters
- » Pearlitic cast iron construction with our proprietary SYMMETRY design
- » Liquid cooled tray for hot cutting tools
- » Micron accurate fine adjust
- » OPTIK Tool Measuring and Management Software Suite
- » Cold Source LED Tool Inspection Light
- » 21.5” touch-screen monitor
- » Automated unshrinking of damaged tools
- » Casters

SPECIFICATIONS

DIMENSIONS & WEIGHT

- » **Length:** 1854mm (73”)
- » **Width:** 813mm (32”)
- » **Height:** 1930mm (76”)
- » **Average Shipping Weight:** 930kg (2050lbs)

MEASURING ENVELOPE

- » **Height:** 600mm
- » **Diameter:** 320mm
- » **Snap Gauge:** 75mm

UTILITIES

- » 120V AC or 220V AC, 50Hz to 63Hz
- » 480V AC 3 phase
- » **Air:** 80-110PSI

OPTIONS

- » Dual 21.5” monitors for tool management window and OPTIK software
- » Label printer



COMPARE

SOLIS

HELIOS

FORTIS

EXACTUS

EVO

FORTIS



FORTIS

With a combined clamping force of over 1,300ft/lbs, the FORTIS Series are the most repeatable measuring machines on the market.



FORTIS PRO

Featuring full 3 axis CNC along with incredible clamping force the FORTIS PRO is an industry leader.



FORTIS XL

The FORTIS-XL can handle heights and diameters up to 1000mm and with a 1000lb spindle capacity it can measure any tool in your arsenal.



FORTIS XL PRO

When measuring large tooling, the full 3 axis cnc on the FORTIS XL PRO makes your job simple, repeatable, and reliable.

COMPARE

SOLIS

HELIOS

FORTIS

EXACTUS

EVO

FORTIS

With over 600ft/lbs of power-clamping spindle force the FORTIS is one of the most repeatable measuring machines on the market.



FEATURES

- » 600ft/lbs universal power clamping spindle with interchangeable cartridge system to work with any tool holding type
- » Integrated spindle brake and 360° indexing
- » 1 micron repeatable measuring
- » Shop floor ready, full size freestanding machine
- » Spindle weight capacity of over 200lbs
- » Precision Tool Tip Finder
- » Cold Source LED Tool Inspection Light
- » Robust easy to use control interface
- » Instantly finds tool geometries
- » Theoretical intersection points
- » Fixed or Dynamic cross-hairs
- » OPTIK Tool Measuring and Management Software Suite
- » 10.5" touch-screen all-in-one monitor
- » Pearlitic cast iron construction with our proprietary SYMMETRY design
- » 70x Magnification lens

SPECIFICATIONS

DIMENSIONS AND WEIGHT

- » **Overall Width:** 1575mm (62")
- » **Depth:** 813mm (32")
- » **Height:**
 - 400mm Column (1730mm / 68")
 - 600mm Column (1930mm / 76")
 - 800mm Column (2130mm / 84")

- » **Average Shipping Weight:** 522kg (1150lbs.)

MEASURING DIAMETERS

- » 420mm (16.5")

UTILITIES

- » 120V AC or 220V AC, 50Hz to 63Hz
- » **Air:** 80-110PSI

OPTIONS

MEASURING LENGTHS

- » 400mm (15.75")
- » 600mm (23.6")
- » 800mm (31.5")

CONTROL SYSTEM OPTIONS

- » Manual and automated RFID systems
- » Mazak Cyber Tool and Smooth Tool Management system integration
- » Data output
- » Holder recognition system
- » Perfect Set, AAIM, and ECHO software modules
- » Virtual control device
- » User management

- » Rolling Kiosk

OPTIONS

- » Autofocus CNC Spindle
- » Upgrade to 21.5" touch screen all-in-one
- » Dual monitors for tool management window and OPTIK software
- » Environmental Enclosure
- » Label printer
- » Laser printer

UPGRADE TO FORTIS PRO

- » System is full 3 axis CNC automation



COMPARE

SOLIS

HELIOS

FORTIS

EXACTUS

EVO

FORTIS XL

The FORTIS-XL can handle heights and diameters up to 1000mm and with a 1000lb spindle capacity it can measure any tool in your arsenal.



FEATURES

- » 600ft/lbs universal power clamping spindle with interchangeable cartridge system to work with any tool holding type
- » Integrated spindle brake and 360° indexing
- » Simple to use 3D VCD with programmable smart buttons
- » 1 micron repeatable measuring
- » Shop floor ready, full size freestanding machine
- » Spindle weight capacity of over 1000lbs
- » Precision Tool Tip Finder
- » Cold Source LED Tool Inspection Light
- » Robust easy to use control interface
- » Pearlitic cast iron construction with our proprietary SYMMETRY design
- » Instantly finds tool geometries
- » Theoretical intersection points
- » Fixed or Dynamic cross-hairs
- » OPTIK Tool Measuring and Management Software Suite
- » 21.5" touch-screen monitor
- » 70x Magnification lens
- » Casters

SPECIFICATIONS

DIMENSIONS AND WEIGHT

- » **Overall Width:** 1838mm (72.4")
- » **Depth:** 701mm (27.6")
- » **Height:**
600mm Column (1948mm/76.7")
1000 mm Column (2342mm/93.2")
- » **Average Shipping Weight:** 1020 kg (2240 lbs.)

MEASURING DIAMETERS

- » 420 mm (16.5")

UTILITIES

- » 120V AC or 220V AC, 50Hz to 63Hz
- » **Air:** 80-110PSI

OPTIONS

MEASURING LENGTHS

- » 650mm - 1000mm Length
- » 650mm - 1000mm Diameter

CONTROL SYSTEM OPTIONS

- » Manual and automated RFID systems
- » Mazak Cyber Tool and Smooth Tool Management system integration
- » Data output
- » Perfect Set, AAIM, and ECHO software modules
- » Holder recognition system

- » User management
- » Snap Gauge: 100mm

OPTIONS

- » Auto-focus CNC Spindle
- » Dual 21.5" monitors for tool management window and OPTIK software
- » Label printer

UPGRADE TO FORTIS XL PRO

- » System is full 3 axis CNC automation



COMPARE

SOLIS

HELIOS

FORTIS

EXACTUS

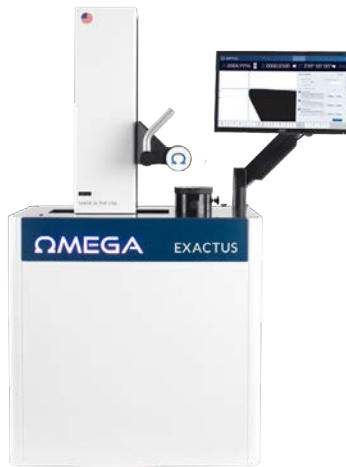
EVO

EXACTUS



EXACTUS LITE

Easy to use, accurate, and robust. The EXACTUS line can transform your production efficiency from good to world class.



EXACTUS

Accurate, repeatable, and reliable. The EXACTUS has the ability to handle any job you can throw at it with simplicity and ease.



EXACTUS PRO

Featuring 3 axis automation, the EXACTUS PRO removes the element of human error from your process.



EXACTUS XL

With the EXACTUS XL there is no job too big or too heavy with up to 1000mm measuring capability and 650lb spindle capacity.



EXACTUS XL PRO

3 Axis automation along with incredible measuring capabilities the EXACTUS XL PRO will make even the most difficult toll setup simple and precise.

COMPARE

SOLIS

HELIOS

FORTIS

EXACTUS

EVO

EXACTUS LITE

Need accurate measurements straight from your workbench?
The EXACTUS LITE tabletop machine is your answer.



FEATURES

- » Precision ground taper 50 spindle
- » Adapters available for all tool holding types
- » 1 micron repeatable measuring
- » Vacuum clamping
- » Shop floor ready
- » Precision Tool Tip Finder
- » Cold Source LED Tool Inspection Light
- » Robust easy to use control interface
- » Pearlitic cast iron construction with our proprietary SYMMETRY design
- » Instantly finds tool geometries
- » Theoretical intersection points
- » Fixed or Dynamic cross-hairs
- » OPTIK Tool Measuring and Management Software Suite
- » 10.5" touch-screen monitor
- » 70x Magnification lens

SPECIFICATIONS

DIMENSIONS AND WEIGHT

- » **Overall Width:** 748mm (30")
- » **Depth:** 527mm (21")
- » **Height:**
 - 400mm Column (890mm/ 35")
 - 600mm Column (1115mm/44")
 - 800mm Column (1315mm/42")
- » **Average Shipping Weight:** 272 kg (600 lbs.)

UTILITIES

- » 120V AC or 220V AC, 50Hz to 63Hz
- » **Air:** 80-110PSI

OPTIONS

MEASURING LENGTHS

- » 400mm (15.75")
- » 600mm (23.6")
- » 800mm (31.5")

CONTROL SYSTEM OPTIONS

- » Manual RFID systems
- » Mazak Cyber Tool and Smooth Tool Management system integration
- » Data output
- » User management and document manager
- » Template Tracking

OPTIONS

- » Upgrade to 21.5" touch screen monitor
- » Dual monitors for tool management window and OPTIK software
- » Label printer
- » *Shown with optional solid maple top workbench



COMPARE

SOLIS

HELIOS

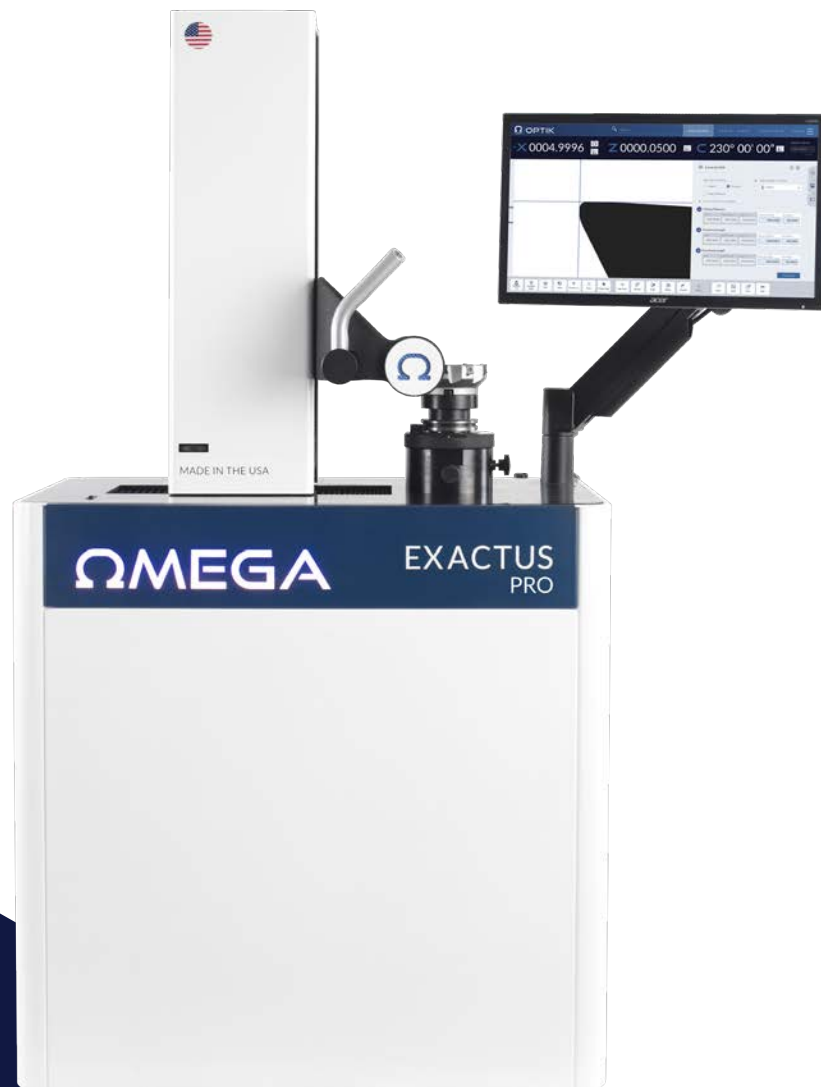
FORTIS

EXACTUS

EVO

EXACTUS

Easy to use, accurate, and robust. The EXACTUS line can transform your production efficiency from good to world class.



FEATURES

- » Precision ground taper 50 spindle
- » Adapters available for all tool holding types
- » 1 micron repeatable measuring
- » Vacuum clamping
- » Shop floor ready full size freestanding machine
- » Precision Tool Tip Finder
- » Cold Source LED Tool Inspection Light
- » Robust easy to use control interface
- » Pearlitic cast iron construction with our proprietary SYMMETRY design
- » Instantly finds tool geometries
- » Theoretical intersection points
- » Fixed or Dynamic cross-hairs
- » 21.5" touch-screen monitor
- » Label printer
- » 70x Magnification lens

SPECIFICATIONS

DIMENSIONS AND WEIGHT

- » **Overall Width:** 1575mm (62")
- » **Depth:** 813mm (32")
- » **Height:**
 - 400mm Column (1730 mm / 68")
 - 600mm Column (1930 mm / 76")
 - 800mm Column (2130 mm / 84")
- » **Average Shipping Weight:**
 - 522kg (1150lbs.)

MEASURING DIAMETERS

- » 420 mm (16.5")

UTILITIES

- » 120V AC or 220V AC, 50Hz to 63Hz
- » **Air:** 80-110PSI

OPTIONS

MEASURING LENGTHS

- » 400mm Column (13.75")
- » 600mm Column (23.6")
- » 800mm Column (31.5")

CONTROL SYSTEM OPTIONS

- » OPTIK user interface
- » Manual and automated RFID systems
- » Mazak Cyber Tool and Smooth Tool Management system integration
- » Data output

- » Perfect Set, AAIM, and ECHO software modules
- » Virtual control device
- » User management

OPTIONS

- » Autofocus CNC Spindle
- » Dual 21.5" monitors for tool management window and OPTIK software

UPGRADE TO FORTIS PRO

- » System is full 3 axis CNC automation



COMPARE

SOLIS

HELIOS

FORTIS

EXACTUS

EVO

EXACTUS XL

Cast iron construction with our proprietary SYMMETRY design, our innovative virtual control device, and multiple spindle options make the EXACTUS-XL the definition of the word “heavyweight”.



FEATURES

- » Precision ground taper 50 spindle
- » Integrated spindle brake and 360° indexing
- » Simple to use 3D Virtual Control Device with programmable smart buttons
- » Shop floor ready, full size freestanding machine
- » Precision Tool Tip Finder
- » Cold Source LED Tool Inspection Light
- » Robust easy to use control interface
- » Pearlitic cast iron construction with our proprietary SYMMETRY design
- » Instantly finds tool geometries
- » Theoretical intersection points
- » Fixed or Dynamic cross-hairs
- » OPTIK Tool Measuring and Management Software Suite
- » 21.5" touch-screen monitor
- » 70x Magnification lens
- » Casters

SPECIFICATIONS

DIMENSIONS AND WEIGHT

- » **Overall Width:** 1838mm (72.4")
- » **Depth:** 701mm (27.6")
- » **Height:**
600mm Column (1948 mm/76.7")
1000mm Column (2342mm/93.2")
- » **Average Shipping Weight:** 1020kg (2240lbs.)

UTILITIES

- » 120V AC or 220V AC, 50Hz to 63Hz
- » **Air:** 80-110PSI

OPTIONS

MEASURING LENGTHS

- » 650mm - 1000mm Length
- » 650mm - 950mm Diameter

CONTROL SYSTEM OPTIONS

- » Manual and automated RFID systems
- » Mazak Cyber Tool and Smooth Tool Management system integration
- » Data output
- » Perfect Set, AAIM, and ECHO software modules
- » Taper 60 spindle
- » HSK 125a spindle

- » User management

OPTIONS

- » Autofocus CNC Spindle
- » Dual 21.5" monitors for tool management window and OPTIK software
- » Label printer
- » Virtual control device

UPGRADE TO EXACTUS XL PRO

- » System is full 3 axis CNC automation



COMPARE

SOLIS

HELIOS

FORTIS

EXACTUS

EVO

EVO



EVO



EVO+

“What customers benefit from the new EVO?”

The EVO was designed with the operator in mind. We’ve made it completely customizable and easy to use, while still providing a ton of features. Whether the customer is new to presetting or has used presetters for years they’re going to love the new EVO and EVO+.



- ALEX MADDOX, SERVICE MANAGER



MADE IN THE USA

MEET EVO – THE ENTRY LEVEL PRESTTERS

The EVO and EVO+ are the most accurate, repeatable and reliable entry-level presetters on the market.

Standard features include a cast iron construction, an 10.5” touch screen and a match-ground, 50-taper spindle.

The EVO+ version enables users to communicate tooling offsets directly to their machine tool with the click of a button. Both machines offer the ability to personalize the outside with a custom vinyl wrap offering different logos, with one option being an American flag wrap to protect the machine from the shop floor environment.



← ASK US ABOUT
CUSTOM BRANDING!

COMPARE

SOLIS

HELIOS

FORTIS

EXACTUS

EVO

EVO

Using the latest software and mechanical technologies, the all-new EVO is the easiest, most accurate entry-level machine, targeted to any industry.



FEATURES

- » Pearlitic cast iron base with proprietary SYMMETRY design
- » Precision match ground taper 50 spindle
- » Integrated spindle brake
- » LED surface inspection light
- » NEW and improved EVO control system with new software
- » 10.5" High-res PixelSense™ touch screen
- » 20x magnification
- » Self-balanced counter weight design that requires no shop air
- » Shop floor ready with rigid steel exterior
- » 1-year parts & labor warranty

SPECIFICATIONS

DIMENSIONS AND WEIGHT

- » **Overall width:** 760mm (30")
- » **Depth:** 521mm (20.5")
- » **Height:** 927mm (36.5")
- » **Average Shipping Weight:** 159kg (350lbs)

MEASURING ENVELOPE

- » 400mm (15.75") Height
- » 250mm (10") Diameter

UTILITIES

- » 120V AC or 220V AC, 50 Hz to 60 Hz

OPTIONS

ACCESSORIES

- » Label Printer
- » Industrial Grade Maple Bench
- » Custom Vinyl Wrapping
- » UPS Battery Backup

UPGRADE

- » 21.5" touch screen monitor

CUSTOMIZABLE DESIGNS

Choose from a selection of available designs or work with our design team to customize an EVO with your own branding & protect from environmental elements.



COMPARE

SOLIS

HELIOS

FORTIS

EXACTUS

EVO

EVO+

Using the latest software and mechanical technologies, the all-new EVO+ is the easiest, most accurate entry-level machine, capable of electronically transmitting tool measurements to your manufacturing operations.



FEATURES

- » Pearlitic cast iron base with proprietary SYMMETRY design
- » Precision match ground taper 50 spindle
- » Integrated spindle brake
- » LED surface inspection light
- » Precision laser tool tip finder
- » NEW and improved EVO control system with new software
- » 21.5" Touch screen
- » 42x magnification
- » Self-balanced counter weight design that requires no shop air
- » Shop floor ready with rigid steel exterior
- » 1-year parts & labor warranty

SPECIFICATIONS

DIMENSIONS AND WEIGHT

- » **Overall width:** 760mm (30")
- » **Depth:** 521mm (20.5")
- » **Height:** 927mm (36.5")
- » **Average Shipping Weight:** 159kg (350lbs)

MEASURING ENVELOPE

- » 400mm (15.75") Height
- » 250mm (10") Diameter

UTILITIES

- » 120V AC or 220V AC, 50 Hz to 60 Hz

OPTIONS

ACCESSORIES

- » Label Printer
- » Industrial Grade Maple Bench
- » Custom Vinyl Wrapping
- » UPS Battery Backup

CUSTOMIZABLE DESIGNS

Choose from a selection of available designs or work with our design team to customize an EVO+ with your own branding & protect from environmental elements.




COMPARE


APEX


MICRO


VERI-GRIND


VERI-GRIND LITE


SHRINKSET

SPECIALTY MACHI

Specialty Machines

Omega TMM has created a lineup of industry specific measuring and induction machines to meet the specific needs of our customers. From glass grinding, to metal cutting, to stone grinding, rest assured Omega TMM has your needs covered.

LEGEND	STANDARD	
	OPTIONAL	
	NOT AVAILABLE	

3 Axis CNC

Universal Power
Clamping Spindle

Taper 50 Spindle

Virtual Control Device

Perfect Set Height
Adjustment

RFID Tool Identification





Data Output/
Post Processing

AAIM Profiling Software

Mobile Command Center



LINE LINEUP

 APEX	 MICRO	 VERI-GRIND	 VERI-GRIND LITE
<input checked="" type="checkbox"/>	<input checked="" type="checkbox"/>	<input checked="" type="checkbox"/>	<input type="checkbox"/>
<input checked="" type="checkbox"/>	<input checked="" type="checkbox"/>	<input type="checkbox"/>	<input type="checkbox"/>
<input type="checkbox"/>	<input type="checkbox"/>	<input checked="" type="checkbox"/>	<input checked="" type="checkbox"/>
<input checked="" type="checkbox"/>	<input checked="" type="checkbox"/>	<input type="checkbox"/>	<input type="checkbox"/>
<input type="checkbox"/>	<input type="checkbox"/>	<input type="checkbox"/>	<input type="checkbox"/>
<input type="checkbox"/>	<input type="checkbox"/>	<input type="checkbox"/>	<input type="checkbox"/>
<input checked="" type="checkbox"/>	<input type="checkbox"/>	<input checked="" type="checkbox"/>	<input type="checkbox"/>
<input checked="" type="checkbox"/>	<input checked="" type="checkbox"/>	<input type="checkbox"/>	<input type="checkbox"/>

COMPARE

APEX

MICRO

VERI-GRIND

VERI-GRIND LITE

SHRINKSET

APEX

Reflection and dirt are the enemies of creating an accurate tool profile. Our APEX machine features a full environmental enclosure with an automated light diffuser to make sure your tools are kept safe from the perils of the shop floor. The APEX can profile all types of tools or grinding wheels for any industry using our AAIM software creating the perfect DXF for comparison or export. Whether it is basic presetting or profiling wheels or form tools the APEX is a world class machine.



FEATURES

- » Fully integrated environmental enclosure with auto-retracting light diffuser
- » OPTIK Tool Measuring and Management Software Suite
- » AAIM profiling software
- » User management
- » Echo
- » Autofocus CNC Spindle
- » Instantly finds tool geometries
- » Theoretical intersection points
- » Fixed or Dynamic cross-hairs
- » 21.5" touch-screen monitor
- » Virtual Control Device
- » 70x Magnification Lens
- » +600lb/ft universal power clamping spindle with interchangeable cartridge system to work with any tool holding type
- » Pearlitic cast iron construction with our proprietary SYMMETRY design
- » Integrated spindle brake and 360° indexing
- » 1 micron repeatable measuring
- » Shop floor ready, full size freestanding machine
- » Precision Tool Tip Finder
- » Cold Source LED Tool Inspection Light
- » Robust easy to use control interface
- » Laser printer
- » Kiosk

SPECIFICATIONS

DIMENSIONS AND WEIGHT

- » Length: 939.8 mm (37")
- » Width: 1168.4mm (46")
- » Height: 1828.8mm (72")
- » Weight: 475kg (1046lbs)

MEASURING ENVELOPE

- » 600mm Height
- » 420mm Diameter
- » 100mm Snap Gauge

UTILITIES

- » 120V AC or 220V AC, 50Hz to 63Hz
- » **Air:** 80-110PSI

OPTIONS

- » Holder Recognition System
- » Automated RFID
- » Data output
- » Perfect Set automated tool height system
- » Mazak Cyber Tool and Smooth Tool Management system integration
- » Dual 21.5" monitors for tool management window and OPTIK software
- » Label printer



COMPARE

APEX

MICRO

VERI-GRIND

VERI-GRIND LITE

SHRINKSET

MICRO

Developed specifically for micro tools and micro features. With an industry-leading 300x lens, the MICRO presetter can measure even the most microscopic features repeatedly and accurately.

If your process requires the use of micro tooling from endmills and drills to super abrasive grinding tools. The 300x lens on the Omega TMM MICRO will ensure a crisp image with industry leading accuracy to set your tools.



FEATURES

- » Fully integrated environmental enclosure with auto-retracting light diffuser
- » 300x magnification bi-telecentric lensing
- » 600+ lb/ft universal power clamping spindle with interchangeable cartridge system to work with any tool holding type
- » Integrated spindle brake and 360° indexing
- » 1 micron or less repeatable measuring
- » Shop floor ready, full size freestanding machine
- » Autofocus CNC Spindle
- » Precision Tool Tip Finder
- » Cold Source LED Tool Inspection Light
- » OPTIK Tool Measuring and Management Software Suite
- » AAIM Profiling Software
- » ECHO
- » Virtual Control Device
- » Robust easy to use control interface
- » Pearlitic cast iron construction with our proprietary SYMMETRY design
- » 21.5" touch screen monitor
- » 3-Axis CNC
- » Label printer
- » Kiosk

SPECIFICATIONS

DIMENSIONS AND WEIGHT

- » **Overall Width:** 1575mm (62")
- » **Depth:** 813mm (32")
- » **Height:** 600mm Column (1730mm / 68")
- » **Average Shipping Weight:** 522kg (1150lbs.)

MEASURING DIAMETERS

- » 420mm (16.5")

UTILITIES

- » 120V AC or 220V AC, 50Hz to 63Hz
- » **Air:** 80-110PSI

OPTIONS

CONTROL SYSTEM OPTIONS

- » Manual and automated RFID systems
- » Mazak Cyber Tool and Smooth
- » Tool Management system integration
- » Data output

- » Perfect Set automated tool height system
- » Holding recognition system
- » Laser printer



"There is no other presetting machine available on the market that can come close to the accuracy and repeatability of the Omega TMM MICRO on even your smallest of tooling."

- MIKE BERNITT, DIRECTOR OF OPERATIONS



COMPARE

APEX

MICRO

VERI-GRIND

VERI-GRIND LITE

SHRINKSET

VERI-GRIND

The VERI-GRIND is the benchmark for grinding wheel form and offset verification in both the metal cutting and stone grinding industries.



FEATURES

- » Instantly finds tool and wheel geometries
- » Theoretical intersection points
- » Fixed or Dynamic cross-hairs
- » OPTIK Tool Measuring and Management Software Suite
- » 21.5" touch-screen monitor
- » Autofocus CNC Spindle
- » Precision ground taper 50 spindle
- » Adapters available for all tool holding types
- » 1 micron repeatable measuring
- » Vacuum clamping
- » Pearlitic cast iron construction with our proprietary SYMMETRY design
- » Shop floor ready full size freestanding machine
- » Precision Tool Tip Finder
- » Cold Source LED Tool Inspection Light
- » Robust easy to use control interface
- » AAIM profiling software with tolerance banding
- » 70x Magnification lens
- » P50-40 Adapter

SPECIFICATIONS

MEASURING DIMENSIONS

- » 420mm (16.5") Diameter
- » 400mm (15.75") Height

UTILITIES

- » 120V AC or 220V AC, 50Hz to 63Hz
- » **Air:** 80-110PSI

DIMENSIONS AND WEIGHT

- » **Overall Width:** 1575mm (62")
- » **Depth:** 813mm (32")
- » **Average Shipping Weight:** 522kg (1150lbs.)

OPTIONS

CONTROL SYSTEM OPTIONS

- » Automated or manual RFID
- » Data output
- » Document manager
- » User management
- » Echo
- » Dual 21.5" monitors
- » Label printer
- » Laser printer



COMPARE

APEX

MICRO

VERI-GRIND

VERI-GRIND LITE

SHRINKSET

VERI-GRIND LITE

VERI-GRIND LITE is the cost-effective bench-top solution for grinding wheel verification.



FEATURES

- » Precision ground taper 50 spindle
- » Adapters available for all tool holding types
- » Template tracking to verify wheel forms
- » 1 micron repeatable measuring
- » Vacuum clamping
- » Shop floor ready
- » Precision Tool Tip Finder
- » Cold Source LED Tool Inspection Light
- » Pearlitic cast iron construction with our proprietary SYMMETRY design
- » Robust easy to use control interface
- » Instantly finds tool geometries
- » Theoretical intersection points
- » Fixed or Dynamic cross-hairs
- » OPTIK Tool Measuring and Management Software Suite
- » 21.5" touch-screen monitor
- » 70x Magnification lens

SPECIFICATIONS

MEASURING DIMENSIONS

- » 420mm (16.5") Diameter
- » 400mm (15.75") Height

UTILITIES

- » 120V AC or 220V AC, 50Hz to 63Hz
- » **Air:** 80-110PSI

DIMENSIONS AND WEIGHT

- » **Overall Width:** 748mm (30")
- » **Depth:** 527mm (21")
- » **Machine Height:**
 - 400mm Column (890mm/ 35")
 - 600mm Column (1115mm/44")
 - 800mm Column (1315mm/42")
- » **Average Shipping Weight:** 272kg (600lbs.)

OPTIONS

OPTIONS

- » Manual RFID systems
- » Data output
- » Dual 21.5" monitors
- » Label printer
- » *Shown with optional solid maple top workbench



COMPARE

APEX

MICRO

VERI-GRIND

VERI-GRIND LITE

SHRINKSET

SHRINKSET

Shrink/remove and cool your tools automatically with the press of a button.



FEATURES

- » 480v power supply
- » Oscillating air cooling (*SHRINKSET* and *SHRINKSET LITE*)
- » Lightning-fast quench cooling (*SHRINKSET Pro*)
- » Adapters and stop discs for multiple tool types are included
- » Automated Cooling Cycle
- » Easy to use full color LCD touch-screen display
- » Automated Heat Cycle
- » Manufactured, assembled, and supported in the U.S.A.

ACCESSORIES AVAILABLE

- » Solid Maple Top Workbench

SHRINKSET LITE

- » **Machine Type:** Compact Tabletop
- » **Heating Time:** <5 Seconds
- » **Cooling Time:** 2 Minutes
- » **Cooling Type:** Oscillating Air
- » **Tool Size:**
Max Length: 280mm/533mm with Ext. (11"/21")
Max Diameter: 3mm-32mm (1/8"-1 1/4")
- » **Adapters Included:**
HSK100/63/50/40
CAT50/40/30
Capto C6

SHRINKSET

- » **Machine Type:** Full-Size Tabletop
- » **Heating Time:** <5 Seconds
- » **Cooling Time:** 2 Minutes
- » **Cooling Type:** Oscillating Air
- » **Tool Size:**
Max Length: 560mm (22")
Max Diameter: 3mm-32mm (1/8"-1 1/4")
- » **Adapters Included:**
HSK100/63/50/40
CAT50/40/30
Capto C6

SHRINKSET PRO

- » **Machine Type:** Freestanding Machine
- » **Heating Time:** <5 Seconds
- » **Cooling Time:** 30 Seconds
- » **Cooling Type:** Auto Quench
- » **Tool Size:**
Max Length: 560mm (22")
Max Diameter: 3mm-32mm (1/8"-1 1/4")
- » **Adapters Included:**
HSK100/63/50/40
CAT50/40/30
Capto C6



TOOL BALANCER

The Dynamic Duo of Tool Balancers and Presetters

In the intricate world of machining, two seemingly distinct components, tool balancers and presetters, converge to form a symbiotic partnership that significantly enhances machining efficiency. At Omega TMM, we're thrilled to introduce our latest innovation, the STATERA tool balancer, a true game-changer that seamlessly complements our precision-focused presetters. This dynamic duo offers a host of compelling advantages, delivering not only enhanced performance but also optimized workflow.

STRIKING THE PERFECT BALANCE

Achieving optimal balance is paramount for achieving peak machining performance. The STATERA tool balancer plays a crucial role in ensuring that each tool operates with impeccable balance, effectively minimizing vibrations and mitigating stress on machinery. This pivotal feature translates into extended tool lifespan, reduced wear and tear, and, ultimately, the production of higher quality machining results.





BALANCER



STATERA

PRECISION AMPLIFIED WITH PRESETTERS

Our presetters have long been recognized for their exceptional accuracy, streamlining tool setup processes and significantly boosting machining efficiency. When paired with the STATERA tool balancer, this precision is taken to new heights. Tools that are pre-balanced by the STATERA undergo meticulous measurement and setup in our presetters, fostering an amalgamation of accuracy and balance that culminates in unmatched machining excellence.

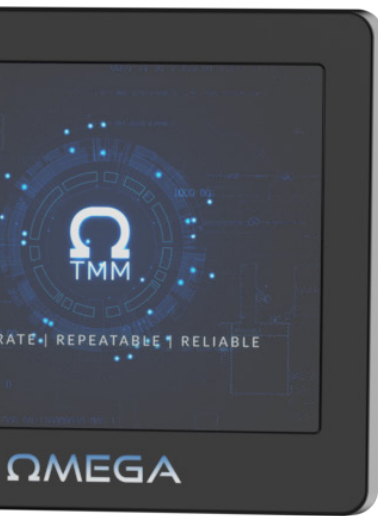
THE INNER WORKINGS OF STATERA

The STATERA tool balancer, an essential component in precision machining, ensures tools are in equilibrium. It achieves this by meticulously adjusting their weight distribution, preventing vibrations and stress during operation. STATERA employs single-plane static and dual-plane dynamic balancing techniques for accuracy. Its durable steel-based construction and transparent manual door guarantee safety on the shop floor. Controlled by a 17" touch screen, STATERA stores balancing programs and displays unbalance values, angular positions, and correction prompts at the end of each cycle. With features like precise unbalanced point indication, dual calibration modes, and adaptable balancing grades, STATERA elevates machining efficiency while promoting machine longevity.



ELEVATING EFFICIENCY – THE POWER OF SYNERGY

In the realm of machining, efficiency is the cornerstone of success. This is precisely where the harmonious alliance of tool balancers and presetters, embodied by the STATERA from Omega TMM, truly shines. This fusion of cutting-edge technologies offers a range of benefits that contribute to elevating your machining processes:



Prolonged Tool Longevity

The STATERA tool balancer's impeccable balance significantly reduces wear on tools, translating into an extended lifespan and a noticeable reduction in replacement costs, thereby optimizing your budget.

Heightened Machining Quality

The intricate balance achieved through the STATERA's precision contributes to superior machining outcomes. Tools that are meticulously balanced, accurately measured, and expertly set guarantee tighter tolerances and consistent, high-quality results.

Reduced Machinery Strain

The balanced state of tools directly alleviates the strain placed on machinery during operation. This results in minimized vibrations and stress on machine components, leading to smoother operation and decreased maintenance requirements over time.

Seamless Workflow

The seamless integration of STATERA-balanced tools with our presetters doesn't merely optimize your machining processes; it revolutionizes them. This unified approach expedites tool setup, enhances overall machining efficiency, and maintains the exceptional accuracy that Omega TMM is renowned for.

EMPOWERING MACHINING EXCELLENCE

In the landscape of manufacturing, precision is the ultimate goal. The fusion of tool balancers and presetters epitomizes this precision, delivering a robust toolkit to achieve top-tier machining outcomes. With Omega TMM's STATERA tool balancer and presetters at your disposal, you're equipped to take your machining excellence to unparalleled heights. Experience the power of precision, efficiency, and innovation with Omega TMM's STATERA and presetters by your side.



BALANCER



STATERA

STATERA

STATERA, Omega TMM's cutting-edge tool balancer, revolutionizes machining by ensuring optimal tool balance. Its precision-driven technology minimizes vibrations, extends tool life, and enhances overall machining excellence, making it an indispensable asset for precision-focused industries.

Seamlessly integrated with any presetter in Omega's lineup, STATERA elevates your tool setup process to new heights of efficiency and accuracy.



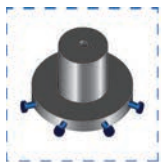
FEATURES

- » Single plane static balancing
- » Dual plane dynamic balancing
- » Mechanical clamping
- » Pneumatic unclamping
- » Coupling seat suited to many kinds of adapters
- » Precise unbalanced point indicator light
- » Steel-based construction, with components built to withstand the shop floor environment
- » Transparent manual door and safety lock
- » 17" touch screen control

SOFTWARE FEATURES

- » Storage of the balancing program within user-friendly database
- » Allows user to see the out of balance angular position in reference to the rotor
- » Dual modes for calibration: self-learning mode or dimensional mode (setting of the correction planes position and correction radii.)
- » Enter balancing grade, rotor weight, and speed to calculate the unbalance threshold
- » Utilizes customer's specific balancing grades
- » Displays the following at the end of a cycle:
 - » *Unbalance value in set measuring unit*
 - » *Angular position of the unbalance*
 - » *Prompts to correct the unbalance (drilling, milling, etc.)*

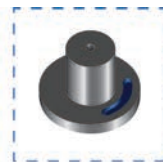
PROGRAMS TO CORRECT UNBALANCE



Displace pre-defined points of radial mass



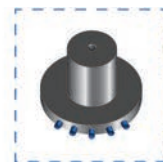
Drill defined points



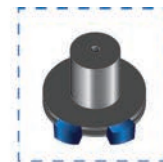
Contour milling



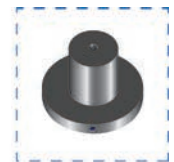
Tangential milling



Tighten or loosen grub screws



Displace two masses



Drill on free position

TECHNICAL

- » Max tool diameter: 400mm (15.75")
- » Max tool height: 550mm (21.7")
- » Max rotor weight: 20kg (44 lbs.)
- » Motor power: 0.1kw
- » Max speed: 800 Rpm
- » Air: 90 psi
- » Weight: 240 kg / 530 lbs.
- » Power: 220V 1 phase, 50-60 Hz

OPTIONS, ADAPTERS, ISO

ADAPTERS:

- » ISO 30/40/50
- » HSK 32 ACE/40 BDF
- » HSK 40 ACE/50 BDF
- » HSK 50 ACE/63 BDF
- » HSK 63 ACE/80 BDF
- » HSK 80 AC/100 BD
- » HSK 100 AC/125 BD

OPTIONS:

- » Thermal printer
- » Data transfer via ethernet

SOLUTIONS

A Giant Leap Towards Complete Interconnectivity

Matrix 4.0, robotic solutions, automated tool vending, CAM integration, total tool management, and Turn-key custom applications are just a few of the ways Omega TMM can help you gain efficiency and create an interconnected factory. Every Smart Factory solution that is provided by Omega TMM is completely customized to meet and exceed your expectations!

SOLUTIONS MADE EASY.

Feel confident that our decades of experience, from working with Top 100 clients all the way to small startups give you the edge that you are investing in a company who will be with you every step of the way. We know the shop floor well. We work on behalf of you to pull in the right partners who have been vetted and tested throughout the tool management life cycle. Our goal is to simplify the way work gets done and get you the right solution to what you are trying to solve. Remember we know tool measuring since we created it over 40 years ago.



MADE IN THE USA



MATRIX 4.0

Matrix 4.0 is the most robust cost-effective solution on the market to move toward secure tooling data management.

The Omega TMM Matrix 4.0 system provides universal direct connectivity to safely upload machine tool offsets with minimal human interaction. Multiple checks and balances provide piece of mind that you have the right tool in the right pocket in the correct machine tool.

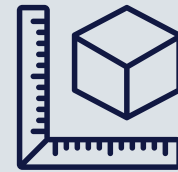


ADVANTAGES

- » Universal - 2-Way Direct Communication Via Ethernet
 - » *Keyboard emulator not required*
 - » *Works with any CNC machine control*
- » Data Transfer - Process Control
 - » *Mitigates operator error, removes the human element of typing in offsets*
 - » *Fewer broken tools and non-conforming parts*
- » Reliable, secure system that creates repeatable tool management ecosystem
 - » *Increase efficiency and uptime*
- » Open System - Platform compatible with multiple manufacturers
 - » *Ability for additional IOs supported*
- » Software developed and supported in the USA
 - » *Quick response to support your operations*

HIGHLIGHTS

- » 2D Matrix Scanning
 - » *Powered by Caron Engineering Tool Connect*
 - » *Full service provided by our team of certified technicians*
- » Durable and Shop Floor Ready
 - » *Configured to your exact requirements*
- » Customized to Your Shop Floor
 - » *A no-cost shop floor assessment to identify your individual needs*
- » Compatible with ANY Presetter
- » Two-Way Communication



MEASURE TOOL

Capture tool data and print matrix code



SCAN MATRIX CODE

Optional hands-free scanning



PLACE TOOL IN CNC

Ready to use



SOFTWARE

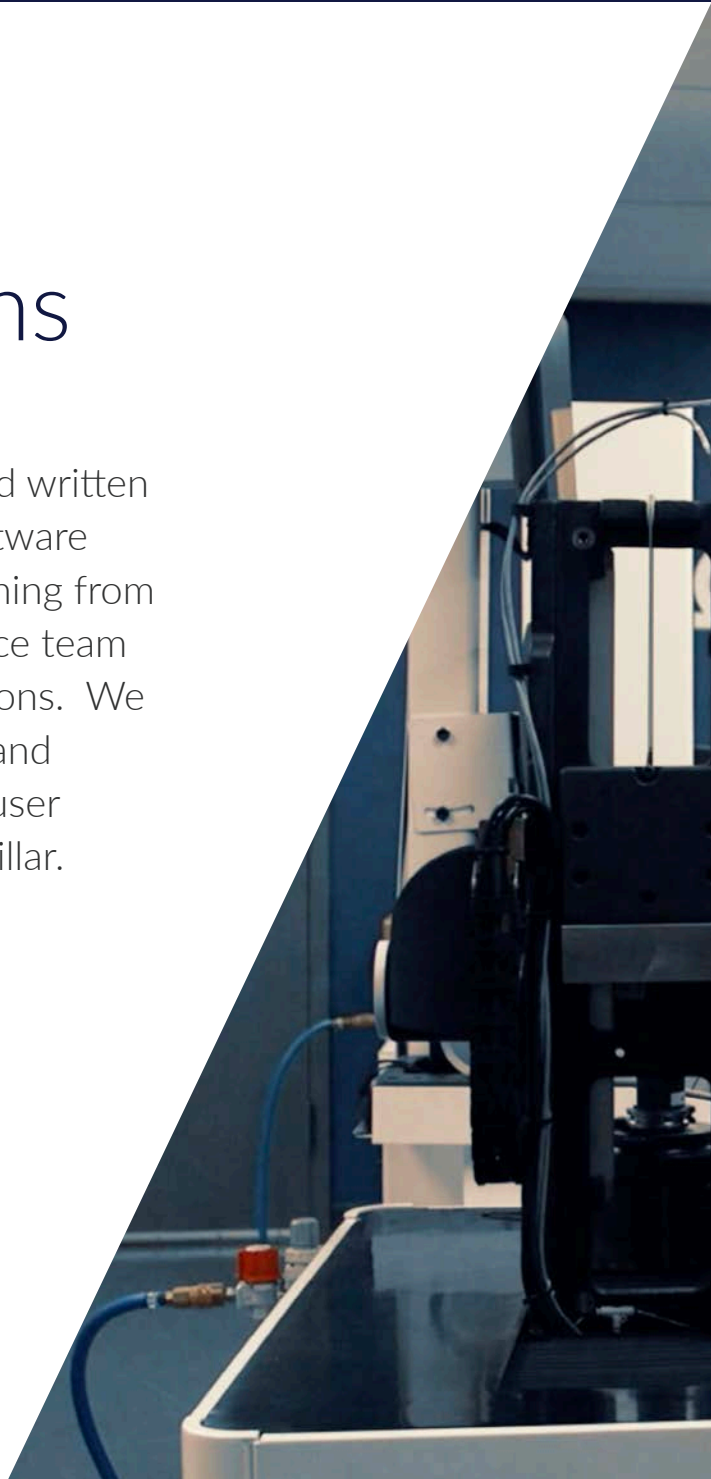
Software Solutions

YOUR GATEWAY TO PERFECTION

All Omega TMM software is designed and written by our in-house Software Team. Our software team has always been involved in everything from product design to working with the service team at a customer site, even custom integrations. We develop our software for the end-users, and in each new update or platform release, user feedback and ease of use is the central pillar.

Our team works right here in the USA, out of our Global Headquarters in Fairport, NY.

User friendly yet robust, our OPTIK software suite is designed for productivity. Intuitive function and an elegant, no-nonsense, user interface make Omega TMM the easiest to use on the market.





MADE IN THE USA



TMM | OPTIK

MEASURING AND INSPECTION SOFTWARE

FAST
USER-FRIENDLY
SCALABLE
SECURE
VIBRANT

Optik is designed with flexibility, upgraded performance, and a responsive, customizable user interface.

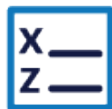
Optik uses the latest technologies, with modularity of features and a sleek, modernized user interface all on one screen. Easier to train, easier to learn, uniform across different machines.



Capture X, Z, radii and angles in real time



Data is sent to RFID systems and machine controls



Clean and informative reporting



Efficient and accurate built-in routines



Mechanical components move at your fingertips



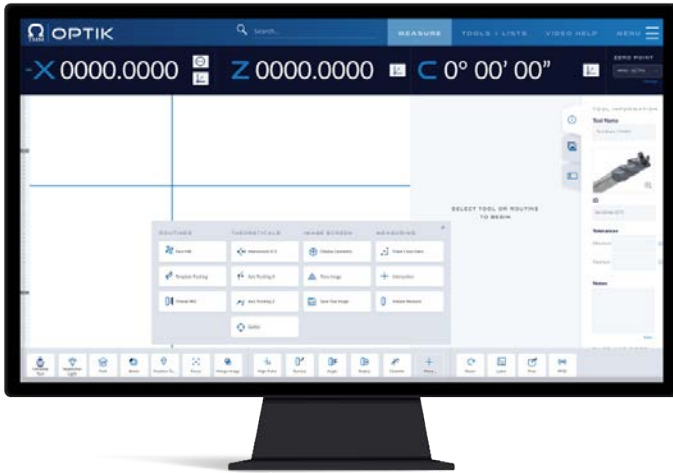
NEXT GENERATION MEASURING SOFTWARE



SOFTWARE

OPTIK

MODULES



INTUITIVE & RELIABLE CUSTOMIZABLE ROUTINES

Optik is adaptable to integrate with any third party software. Easy drag & drop features with powerful best in breed tool measuring software across all presetter models.

“Can I upgrade my current software version?”

“Depending on your current Omega TMM presetter, you may be eligible to upgrade. Contact our sales department for a free assessment to see if your hardware is compatible with Optik.”

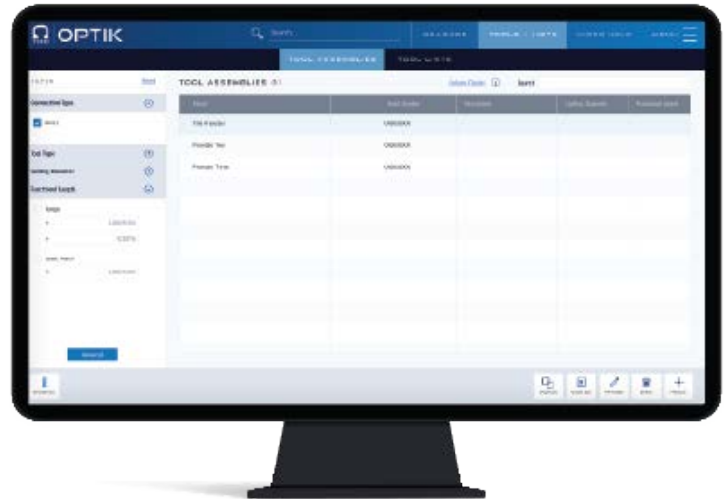
- MIKE BERNITT, DIRECTOR OF OPERATIONS



CONTACT US FOR MORE INFORMATION
SALES@OMEGATMM.COM

AUTOMATION-READY TOOL MANAGEMENT

Optik's architecture allows you to quickly develop solutions for automatic, repeatable measuring routines and macros, integrated and adaptable to any of our partners' shop floors.



DESIGNED, DEVELOPED, & SUPPORTED IN-HOUSE

Talk to our in-house software team about all your software questions - they've got solutions.

We are Omega TMM – World-class tool measuring and management solutions, where our passion is your production. Our shop floor management solutions, presetter and shrink set machines, proudly manufactured and assembled at our Fairport, NY world headquarters, are the most accurate, reliable, and repeatable measuring machines on the market. Everything we do is laser-focused on creating an outstanding customer experience. We welcome the chance to assist in making your manufacturing facility truly world class.



MODULES

AAIM

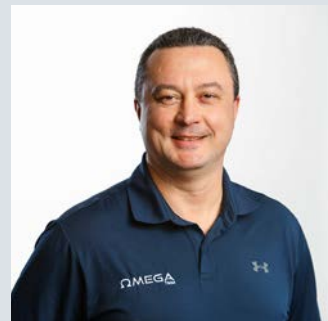
Automated Analysis Inspection and Measurement software allows you to verify profiles and the most difficult forms with ease. Our fully automated imaging software will create a 2+ million point cloud to generate a micron precise DXF for overlay or export. Robust features like tolerance bands, nominal vs. actual comparison, and shadow delete make AAIM your number one choice for all your profiling needs. (3 axis CNC required)

MACRO

The world's only "learning presetter"! Simply turn on the Echo function, measure your tool and Echo will learn your movements, optimize the program, and create your macro. This is hands down the simplest way to program presetting macros on the market. Period. (3 axis CNC required) The Omega TMM Macro module allows users to create automated measuring routines to fit their process and their needs. Our Macro Builder uses an intuitive drag-and-drop canvas to select customizable commands, allowing users to build routines that can be applied to a single tool or an entire class of tooling. A Macro can be fully automated on a Presetter equipped with 3-Axis CNC, or can give step-by-step measurement instructions on a manual machine with an Autofocus spindle.

"Optik is a huge step forward, not just for Omega TMM but for the presetter industry as a whole. Many competitors will try to replicate what we have done but with continued innovation we will always be three steps ahead."

- TIM SHOR, DIRECTOR OF SOFTWARE ENGINEERING



VERI-GRIND SOFTWARE

The VERI-GRIND module and VERI-GRIND machines were created to capture tool profiles and automatically align multiple profiles in a set. Within the module, the cutting profile is captured for one or multiple tools in a set. These profiles are then layered and can be automatically adjusted using the “Best Fit” feature, which will take into account the thickness of material being grinded, and will position each tool to achieve the desired profile. The tool measurements can be printed, posted, or written to the tool via RFID and loaded into the machine center, ready for production.

POST PROCESSOR

The Post Processor in OPTIK allows for one-way communication from the OPTIK database directly to a machine center controller, to update data such as tool offsets and supporting information. The Omega TMM Applications team can write custom post templates to integrate to a machine center that allows for a process that does not depend on users manually typing data into the controller. Mitigating the opportunity for user error results in fewer mistakes like mistyped offset values, while at the same time allowing for the immediate transfer of all information that would alternatively need to be manually entered or updated each time a tool is loaded.

RFID

Omega TMM Presetters can transmit data to an RFID chip either manually or with our fully automated RFID system. When a machine center utilizes RFID to maintain and update tool data and information, transmitting tool offset values and other information from the Presetter to the RFID chip on the tool holder is the best way to input this data. When appropriately equipped, an Omega TMM Presetter can automatically identify a tool in the spindle by reading the RFID tag, immediately run an automatic measuring routine, and then write specific tool data back to the RFID tag with the click of a single button.



Custom Interfaces & 3rd Party Integrations

OPTIK supports a range of integration options with 3rd party providers, which can include RFID hardware, tooling databases, and machine control systems.

Our in-house Software team can design and build custom interfaces for one-off solutions or to meet specific needs. Whether the machine needs to communicate with an automated robot for lights-out operation, or if a shop uses a machine center with a unique control, we can create a custom interface if necessary to provide communication and make the process as efficient as possible.

CONTACT US FOR CUSTOM INTEGRATIONS:
SALES@OMEGATMM.COM



ACCESSORIES & U



TAPER 50 ADAPTERS

Adapt your taper 50 machine to work with any type of tool holder.

- » All taper types
- » ABS
- » Big Plus
- » Clamping HSK
- » Clamping Capto
- » Clamping KM
- » VDI



CLAMPING CARTRIDGES

All cartridges are universal clamping giving you 600+ ft/lbs of pull force on every tool.

- » All taper types
- » ABS
- » Big Plus
- » Clamping HSK
- » Clamping Capto
- » Clamping KM
- » VDI



CERTIFIED TEST BARS

- » 50 taper: 50mm diameter 150mm projection
- » 50 taper: 50mm diameter 300mm projection
- » 50 taper: 50mm diameter 450mm projection



ZERO GAUGES

- » 50 taper: 50mm diameter 75mm projection



MADE IN THE USA

P GRADES



BLUE UNDERGLOW

- » Available on all floor models
- » Dress up your shop by adding a blue glow that will make your Omega TMM the most recognizable machine on the shop floor

WORKBENCH

- » Mounting table-top machines

TECH STANDS

- » Available with dual-monitor setup

ALL AVAILABLE ACCESSORIES

- » Tool tray
- » Cartridge tray
- » Accessory tray
- » Printer
- » Tabletop
- » Holder Recognition System (HRS)
- » Perfect Set
- » Automated RFID
- » Virtual Control Device (VCD)
- » Measuring Sleeves for SOLIS
- » Mazak Cybertool
- » Mobile Command Kiosk
- » Self-Leveling Casters

CUSTOM VINYL WRAPS

- » Available on all presetter models
- » Choose from a selection of available designs or work with our design team to customize a vinyl wrap with your own branding & protect your machine from environmental elements



MADE IN THE USA



FOLLOW US:



©Omega TMM, 2024. All Rights Reserved

*Branded product and company names are trademarks™ or registered® trademarks of their respective holders. Use of them does not imply any affiliation with or endorsement by them.

SALES

Contact us to learn more about available machines, accessories, software and general questions.

P: 1-844-396-5537 Press 2

E: Sales@omegatmm.com

Find your sales manager by state:
www.omegatmm.com/sales

SERVICE DEPARTMENT

Customer service for machinery maintenance and repairs is available by phone, or on-location technicians.

P: 1-844-396-5537 Press 1

E: Service@omegatmm.com

Find Service tips and key contact form:
www.omegatmm.com/sales/service

CALIBRATION SCHEDULING

We highly recommend annual calibration service by an Omega TMM service expert. Call to schedule your next calibration:

P: 1-844-396-5537 Press 1

E: Service@omegatmm.com

RESOURCES & PRESETTER TRAINING

Take advantage of additional resources and training videos on your new presetter.

Find useful resources at:
www.omegatmm.com/resources-downloads

VIRTUAL EVENTS & DEMOS

Our 'John F. Nuccitelli Center for Customer Excellence' hosts live events covering product demos, technology updates and more! No cost! Schedule one today.

P: 1-844-396-5537

E: Sales@OmegaTMM.com

ISO & CALIBRATION CERTIFICATES

Available upon request. Please contact us with your specific needs and our Customer Service team will deliver as needed.

P: 1-844-396-5537 Press 1

E: Service@OmegaTMM.com